

## Anti-Phospho-MDC1-Ser513 antibody (450-530) (STJ91260)

STJ91260

### GENERAL INFORMATION

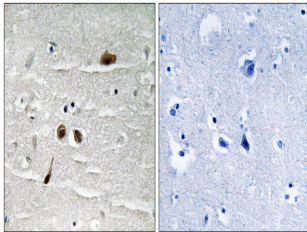
<b>Product Type</b>	Primary antibodies
<b>Short Description</b>	Rabbit polyclonal antibody anti-Phospho-Mediator Of Dna Damage Checkpoint Protein 1-Ser513 (450-530) is suitable for use in Immunohistochemistry, Immunofluorescence and ELISA research applications.
<b>Applications</b>	IHC-P, IF-P, ELISA
<b>Host/Source</b>	Rabbit
<b>Reactivity</b>	Human, Rat, Mouse

### PRODUCT PROPERTIES

<b>Clonality</b>	Polyclonal
<b>Clone ID</b>	
<b>Concentration</b>	1 mg/mL
<b>Conjugation</b>	Unconjugated
<b>Purification</b>	The antibody was affinity-purified from rabbit anti-serum by affinity-chromatography.
<b>Dilution</b>	IHC 1:100-1:300
<b>Range</b>	ELISA 1:5000
<b>Formulation</b>	PBS, 50% Glycerol, 0.5% BSA and 0.02% Sodium Azide.
<b>Isotype</b>	IgG
<b>Storage</b>	Store at -20°C for up to 1 year from the date of receipt, and avoid repeat freeze-thaw cycles.
<b>Instruction</b>	

### TARGET INFORMATION

<b>Gene ID</b>	<a href="#">9656</a>
<b>Gene Symbol</b>	<a href="#">MDC1</a>
<b>Uniprot ID</b>	<a href="#">MDC1_HUMAN</a>
<b>Immunogen</b>	The antiserum was produced against synthesized peptide derived from human MDC1 around the phosphorylation site of Ser513 at amino acid range 479-528
<b>Immunogen Region</b>	450-530
<b>Specificity</b>	Phospho-MDC1-Ser513 polyclonal antibody (Mediator Of Dna Damage Checkpoint Protein 1) binds to endogenous Mediator Of Dna Damage Checkpoint Protein 1 at the amino acid region 450-530 only when phosphorylated at Ser513.
<b>Immunogen Sequence</b>	



Immunohistochemistry analysis of paraffin-embedded human brain, using MDC1 (Phospho-Ser513) Antibody. The picture on the right is blocked with the phospho peptide.