

Anti-Phospho-ITPR1-Ser1764 antibody (1700-1780) (STJ91258)

STJ91258

GENERAL INFORMATION

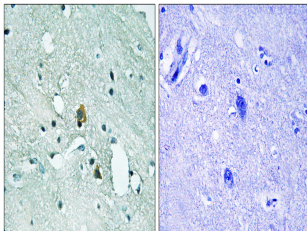
Product Type	Primary antibodies
Short Description	Rabbit polyclonal antibody anti-Phospho-Inositol 1-4-5-Trisphosphate Receptor Type 1-Ser1764 (1700-1780) is suitable for use in Western Blot, Immunohistochemistry, Immunofluorescence and ELISA research applications.
Applications	WB, IHC-P, IF-P, ELISA
Host/Source	Rabbit
Reactivity	Human, Mouse, Rat

PRODUCT PROPERTIES

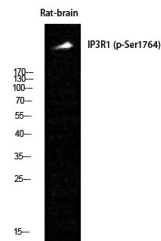
Clonality	Polyclonal
Clone ID	
Concentration	1 mg/mL
Conjugation	Unconjugated
Purification	The antibody was affinity-purified from rabbit anti-serum by affinity-chromatography.
Dilution Range	WB 1:500-2000 IHC 1:100-1:300 ELISA 1:5000
Formulation	PBS, 50% Glycerol, 0.5% BSA and 0.02% Sodium Azide.
Isotype	IgG
Storage Instruction	Store at -20°C for up to 1 year from the date of receipt, and avoid repeat freeze-thaw cycles.

TARGET INFORMATION

Gene ID	3708
Gene Symbol	ITPR1
Uniprot ID	ITPR1_HUMAN
Immunogen	The antiserum was produced against synthesized peptide derived from human IP3R1 around the phosphorylation site of Ser1764 at amino acid range 1730-1779
Immunogen Region	1700-1780
Specificity	Phospho-ITPR1-Ser1764 polyclonal antibody (Inositol 1-4-5-Trisphosphate Receptor Type 1) binds to endogenous Inositol 1-4-5-Trisphosphate Receptor Type 1 at the amino acid region 1700-1780 only when phosphorylated at Ser1764.
Immunogen Sequence	



Immunohistochemistry analysis of paraffin-embedded human brain, using IP3R1 (Phospho-Ser1764) Antibody. The picture on the right is blocked with the phospho peptide.



Western blot analysis of Rat-brain cells using Phospho-IP3R-1 (S1764) Polyclonal Antibody

This product is suitable for in-vitro studies under the RESEARCH USE ONLY [RUO] licence. This product must not be used as for diagnostic or other medical purposes.
St John's Laboratory Ltd, Knowledge Dock Business Centre, University Way, London, E16 2RD | Tel: 0208 223 3081