

Anti-Phospho-CCDC88A-Ser1417 antibody (1360-1440) (STJ91256)

STJ91256

GENERAL INFORMATION

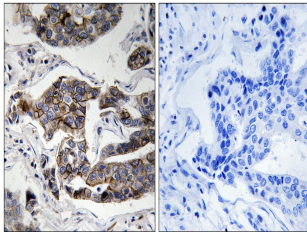
Product Type	Primary antibodies
Short Description	Rabbit polyclonal antibody anti-Phospho-Girdin-Ser1417 (1360-1440) is suitable for use in Immunohistochemistry, Immunofluorescence and ELISA research applications.
Applications	IHC-P, IF-P, ELISA
Host/Source	Rabbit
Reactivity	Human, Mouse

PRODUCT PROPERTIES

Clonality	Polyclonal
Clone ID	
Concentration	1 mg/mL
Conjugation	Unconjugated
Purification	The antibody was affinity-purified from rabbit anti-serum by affinity-chromatography.
Dilution Range	IHC 1:100-1:300 ELISA 1:5000
Formulation	PBS, 50% Glycerol, 0.5% BSA and 0.02% Sodium Azide.
Isotype	IgG
Storage Instruction	Store at -20°C for up to 1 year from the date of receipt, and avoid repeat freeze-thaw cycles.

TARGET INFORMATION

Gene ID	55704
Gene Symbol	CCDC88A
Uniprot ID	GRDN_HUMAN
Immunogen	The antiserum was produced against synthesized peptide derived from human Girdin around the phosphorylation site of Ser1417 at amino acid range 1383-1432
Immunogen Region	1360-1440
Specificity	Phospho-CCDC88A-Ser1417 polyclonal antibody (Girdin) binds to endogenous Girdin at the amino acid region 1360-1440 only when phosphorylated at Ser1417.
Immunogen Sequence	



Immunohistochemistry analysis of paraffin-embedded human breast carcinoma, using Girdin (Phospho-Ser1417) Antibody. The picture on the right is blocked with the phospho peptide.