

Anti-Phospho-GPS1-Ser454 antibody (390-470) (STJ91250)

STJ91250

GENERAL INFORMATION

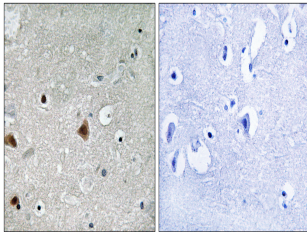
Product Type	Primary antibodies
Short Description	Rabbit polyclonal antibody anti-Phospho-Cop9 Signalosome Complex Subunit 1-Ser454 (390-470) is suitable for use in Immunohistochemistry, Immunofluorescence and ELISA research applications.
Applications	IHC-P, IF-P, ELISA
Host/Source	Rabbit
Reactivity	Human, Mouse, Rat

PRODUCT PROPERTIES

Clonality	Polyclonal
Clone ID	
Concentration	1 mg/mL
Conjugation	Unconjugated
Purification	The antibody was affinity-purified from rabbit anti-serum by affinity-chromatography.
Dilution	IHC 1:100-1:300
Range	ELISA 1:5000
Formulation	PBS, 50% Glycerol, 0.5% BSA and 0.02% Sodium Azide.
Isotype	IgG
Storage	Store at -20°C for up to 1 year from the date of receipt, and avoid repeat freeze-thaw cycles.
Instruction	

TARGET INFORMATION

Gene ID	2873
Gene Symbol	GPS1
Uniprot ID	CSN1_HUMAN
Immunogen	The antiserum was produced against synthesized peptide derived from human COPS1 around the phosphorylation site of Ser454 at amino acid range 420-469
Immunogen Region	390-470
Specificity	Phospho-GPS1-Ser454 polyclonal antibody (Cop9 Signalosome Complex Subunit 1) binds to endogenous Cop9 Signalosome Complex Subunit 1 at the amino acid region 390-470 only when phosphorylated at Ser454.
Immunogen Sequence	



Immunohistochemistry analysis of paraffin-embedded human brain, using COPS1 (Phospho-Ser454) Antibody. The picture on the right is blocked with the phosphopeptide.