

## Anti-Phospho-CLDN5-Tyr217 antibody (150-230) (STJ91249)

STJ91249

### GENERAL INFORMATION

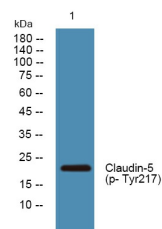
<b>Product Type</b>	Primary antibodies
<b>Short Description</b>	Rabbit polyclonal antibody anti-Phospho-Claudin-5-Tyr217 (150-230) is suitable for use in Immunohistochemistry, Immunofluorescence, Western Blot and ELISA research applications.
<b>Applications</b>	IHC-P, IF-P, WB, ELISA
<b>Host/Source</b>	Rabbit
<b>Reactivity</b>	Human, Mouse, Rat

### PRODUCT PROPERTIES

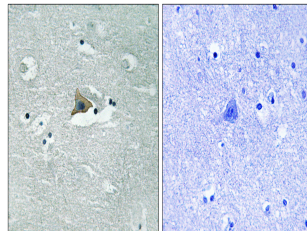
<b>Clonality</b>	Polyclonal
<b>Clone ID</b>	
<b>Concentration</b>	1 mg/mL
<b>Conjugation</b>	Unconjugated
<b>Purification</b>	The antibody was affinity-purified from rabbit anti-serum by affinity-chromatography.
<b>Dilution Range</b>	WB 1:500-2000 IHC 1:100-1:300 ELISA 1:5000
<b>Formulation</b>	PBS, 50% Glycerol, 0.5% BSA and 0.02% Sodium Azide.
<b>Isotype</b>	IgG
<b>Storage Instruction</b>	Store at -20°C for up to 1 year from the date of receipt, and avoid repeat freeze-thaw cycles.

### TARGET INFORMATION

<b>Gene ID</b>	7122
<b>Gene Symbol</b>	CLDN5
<b>Uniprot ID</b>	CLD5_HUMAN
<b>Immunogen</b>	The antiserum was produced against synthesized peptide derived from human Claudin 5 around the phosphorylation site of Tyr217 at amino acid range 169-218
<b>Immunogen Region</b>	150-230
<b>Specificity</b>	Phospho-CLDN5-Tyr217 polyclonal antibody (Claudin-5) binds to endogenous Claudin-5 at the amino acid region 150-230 only when phosphorylated at Tyr217.
<b>Immunogen Sequence</b>	



Western blot analysis of lysates from HCT116 cells, primary antibody was diluted at 1:1000, 4°C over night



Immunohistochemistry analysis of paraffin-embedded human brain, using Claudin 5 (Phospho-Tyr217) Antibody. The picture on the right is blocked with the phospho peptide.

This product is suitable for in-vitro studies under the RESEARCH USE ONLY [RUO] licence. This product must not be used as for diagnostic or other medical purposes.  
St John's Laboratory Ltd, Knowledge Dock Business Centre, University Way, London, E16 2RD | Tel: 0208 223 3081