

Anti-Phospho-CDC25C-Ser198 antibody (140-220) (STJ91245)

STJ91245

GENERAL INFORMATION

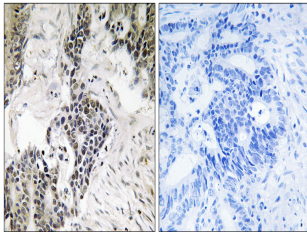
Product Type	Primary antibodies
Short Description	Rabbit polyclonal antibody anti-Phospho-M-Phase Inducer Phosphatase 3-Ser198 (140-220) is suitable for use in Immunohistochemistry, Immunofluorescence and ELISA research applications.
Applications	IHC-P, IF-P, ELISA
Host/Source	Rabbit
Reactivity	Human, Rat, Mouse

PRODUCT PROPERTIES

Clonality	Polyclonal
Clone ID	
Concentration	1 mg/mL
Conjugation	Unconjugated
Purification	The antibody was affinity-purified from rabbit anti-serum by affinity-chromatography.
Dilution	IHC 1:100-1:300
Range	ELISA 1:5000
Formulation	PBS, 50% Glycerol, 0.5% BSA and 0.02% Sodium Azide.
Isotype	IgG
Storage Instruction	Store at -20°C for up to 1 year from the date of receipt, and avoid repeat freeze-thaw cycles.

TARGET INFORMATION

Gene ID	995
Gene Symbol	CDC25C
Uniprot ID	MPIP3_HUMAN
Immunogen	The antiserum was produced against synthesized peptide derived from human CDC25C around the phosphorylation site of Ser198 at amino acid range 164-213
Immunogen Region	140-220
Specificity	Phospho-CDC25C-Ser198 polyclonal antibody (M-Phase Inducer Phosphatase 3) binds to endogenous M-Phase Inducer Phosphatase 3 at the amino acid region 140-220 only when phosphorylated at Ser198.
Immunogen Sequence	



Immunohistochemistry analysis of paraffin-embedded human colon carcinoma, using CDC25C (Phospho-Ser198) Antibody. The picture on the right is blocked with the phospho-peptide.