

Anti-Phospho-ATF2-Ser472 antibody (410-490) (STJ91240)

STJ91240

GENERAL INFORMATION

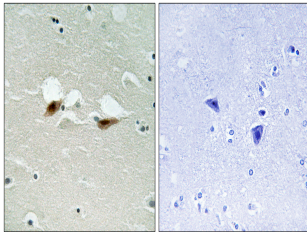
Product Type	Primary antibodies
Short Description	Rabbit polyclonal antibody anti-Phospho-Cyclic Amp-Dependent Transcription Factor Atf-2-Ser472 (410-490) is suitable for use in Immunohistochemistry, Immunofluorescence and ELISA research applications.
Applications	IHC-P, IF-P, ELISA
Host/Source	Rabbit
Reactivity	Human, Mouse, Rat

PRODUCT PROPERTIES

Clonality	Polyclonal
Clone ID	
Concentration	1 mg/mL
Conjugation	Unconjugated
Purification	The antibody was affinity-purified from rabbit anti-serum by affinity-chromatography.
Dilution	IHC 1:100-1:300
Range	ELISA 1:5000
Formulation	PBS, 50% Glycerol, 0.5% BSA and 0.02% Sodium Azide.
Isotype	IgG
Storage	Store at -20°C for up to 1 year from the date of receipt, and avoid repeat freeze-thaw cycles.
Instruction	

TARGET INFORMATION

Gene ID	1386
Gene Symbol	ATF2
Uniprot ID	ATF2_HUMAN
Immunogen	The antiserum was produced against synthesized peptide derived from human ATF-2 around the phosphorylation site of Ser472 at amino acid range 441-490
Immunogen Region	410-490
Specificity	Phospho-ATF2-Ser472 polyclonal antibody (Cyclic Amp-Dependent Transcription Factor Atf-2) binds to endogenous Cyclic Amp-Dependent Transcription Factor Atf-2 at the amino acid region 410-490 only when phosphorylated at Ser472.
Immunogen Sequence	



Immunohistochemistry analysis of paraffin-embedded human brain, using ATF-2 (Phospho-Ser472) Antibody. The picture on the right is blocked with the phospho peptide.