

Anti-Phospho-ATR-Ser428 antibody (370-450) (STJ91234)

STJ91234

GENERAL INFORMATION

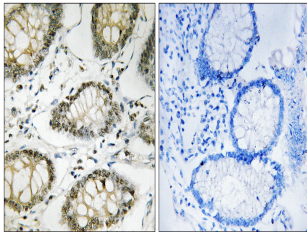
Product Type	Primary antibodies
Short Description	Rabbit polyclonal antibody anti-Phospho-Serine/Threonine-Protein Kinase Atr-Ser428 (370-450) is suitable for use in Immunohistochemistry, Immunofluorescence and ELISA research applications.
Applications	IHC-P, IF-P, ELISA
Host/Source	Rabbit
Reactivity	Human, Rat, Mouse

PRODUCT PROPERTIES

Clonality	Polyclonal
Clone ID	
Concentration	1 mg/mL
Conjugation	Unconjugated
Purification	The antibody was affinity-purified from rabbit anti-serum by affinity-chromatography.
Dilution	IHC 1:100-1:300
Range	ELISA 1:40000
Formulation	PBS, 50% Glycerol, 0.5% BSA and 0.02% Sodium Azide.
Isotype	IgG
Storage	Store at -20°C for up to 1 year from the date of receipt, and avoid repeat freeze-thaw cycles.
Instruction	

TARGET INFORMATION

Gene ID	545
Gene Symbol	ATR
Uniprot ID	ATR_HUMAN
Immunogen	The antiserum was produced against synthesized peptide derived from human ATR around the phosphorylation site of Ser428 at amino acid range 394-443
Immunogen Region	370-450
Specificity	Phospho-ATR-Ser428 polyclonal antibody (Serine/Threonine-Protein Kinase Atr) binds to endogenous Serine/Threonine-Protein Kinase Atr at the amino acid region 370-450 only when phosphorylated at Ser428.
Immunogen Sequence	



Immunohistochemistry analysis of paraffin-embedded human colon carcinoma, using ATR (Phospho-Ser428) Antibody. The picture on the right is blocked with the phospho peptide.