

Anti-Phospho-CBX5-Ser92 antibody (30-110) (STJ91233)

STJ91233

GENERAL INFORMATION

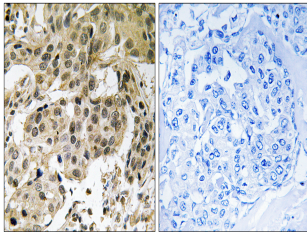
Product Type	Primary antibodies
Short Description	Rabbit polyclonal antibody anti-Phospho-Chromobox Protein Homolog 5-Ser92 (30-110) is suitable for use in Immunohistochemistry, Immunofluorescence and ELISA research applications.
Applications	IHC-P, IF-P, ELISA
Host/Source	Rabbit
Reactivity	Human, Rat, Mouse

PRODUCT PROPERTIES

Clonality	Polyclonal
Clone ID	
Concentration	1 mg/mL
Conjugation	Unconjugated
Purification	The antibody was affinity-purified from rabbit anti-serum by affinity-chromatography.
Dilution	IHC 1:100-1:300
Range	ELISA 1:40000
Formulation	PBS, 50% Glycerol, 0.5% BSA and 0.02% Sodium Azide.
Isotype	IgG
Storage Instruction	Store at -20°C for up to 1 year from the date of receipt, and avoid repeat freeze-thaw cycles.

TARGET INFORMATION

Gene ID	23468
Gene Symbol	CBX5
Uniprot ID	CBX5_HUMAN
Immunogen	The antiserum was produced against synthesized peptide derived from human HP1 alpha around the phosphorylation site of Ser92 at amino acid range 58-107
Immunogen Region	30-110
Specificity	Phospho-CBX5-Ser92 polyclonal antibody (Chromobox Protein Homolog 5) binds to endogenous Chromobox Protein Homolog 5 at the amino acid region 30-110 only when phosphorylated at Ser92.
Immunogen Sequence	



Immunohistochemistry analysis of paraffin-embedded human breast carcinoma, using HP1 alpha (Phospho-Ser92) Antibody. The picture on the right is blocked with the phospho peptide.