

Anti-Phospho-ITCH-Tyr420 antibody (360-440) (STJ91232)

STJ91232

GENERAL INFORMATION

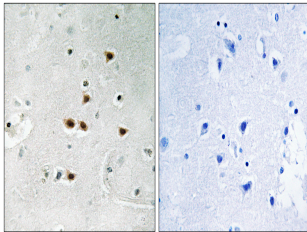
Product Type	Primary antibodies
Short Description	Rabbit polyclonal antibody anti-Phospho-E3 Ubiquitin-Protein Ligase Itchy Homolog-Tyr420 (360-440) is suitable for use in Immunohistochemistry, Immunofluorescence and ELISA research applications.
Applications	IHC-P, IF-P, ELISA
Host/Source	Rabbit
Reactivity	Human, Mouse

PRODUCT PROPERTIES

Clonality	Polyclonal
Clone ID	
Concentration	1 mg/mL
Conjugation	Unconjugated
Purification	The antibody was affinity-purified from rabbit anti-serum by affinity-chromatography.
Dilution	IHC 1:100-1:300
Range	ELISA 1:20000
Formulation	PBS, 50% Glycerol, 0.5% BSA and 0.02% Sodium Azide.
Isotype	IgG
Storage	Store at -20°C for up to 1 year from the date of receipt, and avoid repeat freeze-thaw cycles.
Instruction	

TARGET INFORMATION

Gene ID	83737
Gene Symbol	ITCH
Uniprot ID	ITCH_HUMAN
Immunogen	The antiserum was produced against synthesized peptide derived from human ITCH around the phosphorylation site of Tyr420 at amino acid range 386-435
Immunogen Region	360-440
Specificity	Phospho-ITCH-Tyr420 polyclonal antibody (E3 Ubiquitin-Protein Ligase Itchy Homolog) binds to endogenous E3 Ubiquitin-Protein Ligase Itchy Homolog at the amino acid region 360-440 only when phosphorylated at Tyr420.
Immunogen Sequence	



Immunohistochemistry analysis of paraffin-embedded human brain, using ITCH (Phospho-Tyr420) Antibody. The picture on the right is blocked with the phospho peptide.