

## Anti-Phospho-Histone H2A-Thr121 antibody (60-140) (STJ91231)

STJ91231

### GENERAL INFORMATION

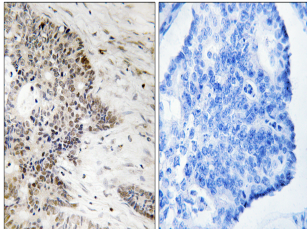
<b>Product Type</b>	Primary antibodies
<b>Short Description</b>	Rabbit polyclonal antibody anti-Phospho-Histone H2A type 1 and Histone H2A type 1-B/E and Histone H2A type 1-D and Histone H2A type 1-H and Histone H2A type 2-A and Histone H2A type 3-Thr121 (60-140) is suitable for use in Western Blot, Immunohistochemistry
<b>Applications</b>	WB, IHC-P, IF-P, ELISA
<b>Host/Source</b>	Rabbit
<b>Reactivity</b>	Human, Mouse, Rat

### PRODUCT PROPERTIES

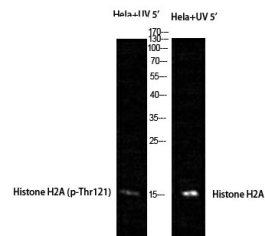
<b>Clonality</b>	Polyclonal
<b>Clone ID</b>	
<b>Concentration</b>	1 mg/mL
<b>Conjugation</b>	Unconjugated
<b>Purification</b>	The antibody was affinity-purified from rabbit anti-serum by affinity-chromatography.
<b>Dilution Range</b>	WB 1:500-2000 IHC 1:100-1:300 ELISA 1:5000
<b>Formulation</b>	PBS, 50% Glycerol, 0.5% BSA and 0.02% Sodium Azide.
<b>Isotype</b>	IgG
<b>Storage Instruction</b>	Store at -20°C for up to 1 year from the date of receipt, and avoid repeat freeze-thaw cycles.

### TARGET INFORMATION

<b>Gene ID</b>	<a href="#">92815</a> <a href="#">8329/8330/8332/8336/8969</a>
<b>Gene Symbol</b>	<a href="#">H2AW</a> <a href="#">H2AC11.H2AC13.H2AC15.H2AC16.H2AC17</a>
<b>Uniprot ID</b>	<a href="#">H2A3_HUMAN</a> <a href="#">H2A1_HUMAN</a> <a href="#">H2A1D_HUMAN</a>
<b>Immunogen</b>	The antiserum was produced against synthesized peptide derived from human Histone H2A around the phosphorylation site of Thr121 at amino acid range 81-130
<b>Immunogen Region</b>	60-140
<b>Specificity</b>	Phospho-Histone H2A-Thr121 polyclonal antibody (Histone H2A type 1 and Histone H2A type 1-B/E and Histone H2A type 1-D and Histone H2A type 1-H and Histone H2A type 2-A and Histone H2A type 3) binds to endogenous Histone H2A type 1 and Histone H2A type 1-B/E and Histone H2A type 1-D and Histone H2A type 1-H and Histone H2A type 2-A and Histone H2A type 3
<b>Immunogen Sequence</b>	



Immunohistochemistry analysis of paraffin-embedded human colon carcinoma, using Histone H2A (Phospho-Thr121) Antibody. The picture on the right is blocked with the phospho peptide.



Western blot analysis of HeLa+UV 5' cells using Phospho-Histone H2A (T121) Polyclonal Antibody cells nucleus extracted by Minute TM Cytoplasmic and Nuclear Fractionation kit (SC-003, Inventiotech, MN, USA).

This product is suitable for in-vitro studies under the RESEARCH USE ONLY [RUO] licence. This product must not be used as for diagnostic or other medical purposes.  
St John's Laboratory Ltd, Knowledge Dock Business Centre, University Way, London, E16 2RD | Tel: 0208 223 3081