

Anti-Phospho-BCL2L1-Thr115 antibody (50-130) (STJ91229)

STJ91229

GENERAL INFORMATION

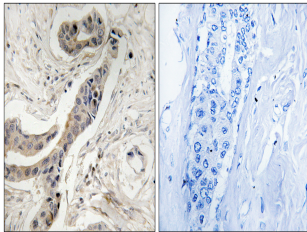
Product Type	Primary antibodies
Short Description	Rabbit polyclonal antibody anti-Phospho-Bcl-2-Like Protein 1-Thr115 (50-130) is suitable for use in Immunohistochemistry, Immunofluorescence and ELISA research applications.
Applications	IHC-P, IF-P, ELISA
Host/Source	Rabbit
Reactivity	Human, Mouse, Rat

PRODUCT PROPERTIES

Clonality	Polyclonal
Clone ID	
Concentration	1 mg/mL
Conjugation	Unconjugated
Purification	The antibody was affinity-purified from rabbit anti-serum by affinity-chromatography.
Dilution Range	IHC 1:100-1:300 ELISA 1:5000
Formulation	PBS, 50% Glycerol, 0.5% BSA and 0.02% Sodium Azide.
Isotype	IgG
Storage	Store at -20°C for up to 1 year from the date of receipt, and avoid repeat freeze-thaw cycles.
Instruction	

TARGET INFORMATION

Gene ID	598
Gene Symbol	BCL2L1
Uniprot ID	B2CL1_HUMAN
Immunogen	The antiserum was produced against synthesized peptide derived from human BCL-XL around the phosphorylation site of Thr115 at amino acid range 81-130
Immunogen Region	50-130
Specificity	Phospho-BCL2L1-Thr115 polyclonal antibody (Bcl-2-Like Protein 1) binds to endogenous Bcl-2-Like Protein 1 at the amino acid region 50-130 only when phosphorylated at Thr115.
Immunogen Sequence	



Immunohistochemistry analysis of paraffin-embedded human breast carcinoma, using BCL-XL (Phospho-Thr115) Antibody. The picture on the right is blocked with the phospho peptide.