

Anti-Phospho-ANAPC1-Ser355 antibody (290-370) (STJ91228)

STJ91228

GENERAL INFORMATION

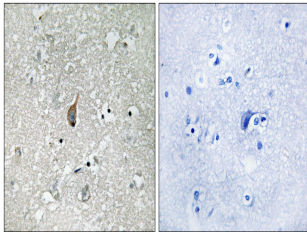
Product Type	Primary antibodies
Short Description	Rabbit polyclonal antibody anti-Phospho-Anaphase-Promoting Complex Subunit 1-Ser355 (290-370) is suitable for use in Immunohistochemistry, Immunofluorescence and ELISA research applications.
Applications	IHC-P, IF-P, ELISA
Host/Source	Rabbit
Reactivity	Human, Mouse

PRODUCT PROPERTIES

Clonality	Polyclonal
Clone ID	
Concentration	1 mg/mL
Conjugation	Unconjugated
Purification	The antibody was affinity-purified from rabbit anti-serum by affinity-chromatography.
Dilution	IHC 1:100-1:300
Range	ELISA 1:5000
Formulation	PBS, 50% Glycerol, 0.5% BSA and 0.02% Sodium Azide.
Isotype	IgG
Storage Instruction	Store at -20°C for up to 1 year from the date of receipt, and avoid repeat freeze-thaw cycles.

TARGET INFORMATION

Gene ID	64682
Gene Symbol	ANAPC1
Uniprot ID	APC1_HUMAN
Immunogen	The antiserum was produced against synthesized peptide derived from human APC1 around the phosphorylation site of Ser355 at amino acid range 321-370
Immunogen Region	290-370
Specificity	Phospho-ANAPC1-Ser355 polyclonal antibody (Anaphase-Promoting Complex Subunit 1) binds to endogenous Anaphase-Promoting Complex Subunit 1 at the amino acid region 290-370 only when phosphorylated at Ser355.
Immunogen Sequence	



Immunohistochemistry analysis of paraffin-embedded human brain, using APC1 (Phospho-Ser355) Antibody. The picture on the right is blocked with the phospho peptide.