

Anti-Phospho-Ephrin-B1/2-Tyr329 antibody (270-350) (STJ91226)

STJ91226

GENERAL INFORMATION

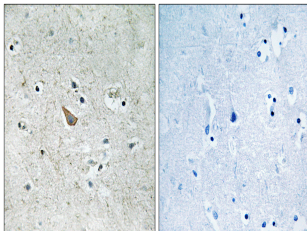
Product Type	Primary antibodies
Short Description	Rabbit polyclonal antibody anti-Phospho-Ephrin-B1 and Ephrin-B2-Tyr329 (270-350) is suitable for use in Immunohistochemistry, Immunofluorescence and ELISA research applications.
Applications	IHC-P, IF-P, ELISA
Host/Source	Rabbit
Reactivity	Human, Mouse, Rat

PRODUCT PROPERTIES

Clonality	Polyclonal
Clone ID	
Concentration	1 mg/mL
Conjugation	Unconjugated
Purification	The antibody was affinity-purified from rabbit anti-serum by affinity-chromatography.
Dilution	IHC 1:100-1:300
Range	ELISA 1:10000
Formulation	PBS, 50% Glycerol, 0.5% BSA and 0.02% Sodium Azide.
Isotype	IgG
Storage	Store at -20°C for up to 1 year from the date of receipt, and avoid repeat freeze-thaw cycles.
Instruction	

TARGET INFORMATION

Gene ID	1947 1948
Gene Symbol	EFNB1 EFNB2
Uniprot ID	EFNB1_HUMAN EFNB2_HUMAN
Immunogen	The antiserum was produced against synthesized peptide derived from human Ephrin B1/B2 around the phosphorylation site of Tyr329 at amino acid range 295-344
Immunogen Region	270-350
Specificity	Phospho-Ephrin-B1/2-Tyr329 polyclonal antibody (Ephrin-B1 and Ephrin-B2) binds to endogenous Ephrin-B1 and Ephrin-B2 at the amino acid region 270-350 only when phosphorylated at Tyr329.
Immunogen Sequence	



Immunohistochemistry analysis of paraffin-embedded human brain, using Ephrin B1/B2 (Phospho-Tyr329) Antibody. The picture on the right is blocked with the phospho-peptide.

This product is suitable for in-vitro studies under the RESEARCH USE ONLY [RUO] licence. This product must not be used as for diagnostic or other medical purposes.
St John's Laboratory Ltd, Knowledge Dock Business Centre, University Way, London, E16 2RD | Tel: 0208 223 3081