

Anti-Phospho-WEE1-Ser53 antibody (30-110) (STJ91224)

STJ91224

GENERAL INFORMATION

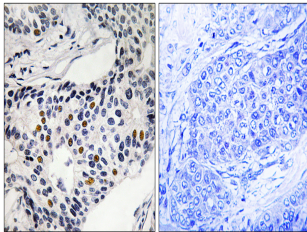
Product Type	Primary antibodies
Short Description	Rabbit polyclonal antibody anti-Phospho-Wee1-Like Protein Kinase-Ser53 (30-110) is suitable for use in Immunohistochemistry, Immunofluorescence and ELISA research applications.
Applications	IHC-P, IF-P, ELISA
Host/Source	Rabbit
Reactivity	Human, Mouse, Rat

PRODUCT PROPERTIES

Clonality	Polyclonal
Clone ID	
Concentration	1 mg/mL
Conjugation	Unconjugated
Purification	The antibody was affinity-purified from rabbit anti-serum by affinity-chromatography.
Dilution Range	IHC 1:100-1:300 ELISA 1:20000
Formulation	PBS, 50% Glycerol, 0.5% BSA and 0.02% Sodium Azide.
Isotype	IgG
Storage Instruction	Store at -20°C for up to 1 year from the date of receipt, and avoid repeat freeze-thaw cycles.

TARGET INFORMATION

Gene ID	7465
Gene Symbol	WEE1
Uniprot ID	WEE1_HUMAN
Immunogen	The antiserum was produced against synthesized peptide derived from human WEE1 around the phosphorylation site of Ser53 at amino acid range 19-68
Immunogen Region	30-110
Specificity	Phospho-WEE1-Ser53 polyclonal antibody (Wee1-Like Protein Kinase) binds to endogenous Wee1-Like Protein Kinase at the amino acid region 30-110 only when phosphorylated at Ser53.
Immunogen Sequence	



Immunohistochemistry analysis of paraffin-embedded human breast carcinoma, using WEE1 (Phospho-Ser53) Antibody. The picture on the right is blocked with the phospho peptide.