

Anti-Phospho-FLT1-Tyr1048 antibody (980-1060) (STJ91223)

STJ91223

GENERAL INFORMATION

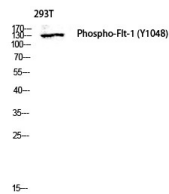
Product Type	Primary antibodies
Short Description	Rabbit polyclonal antibody anti-Phospho-Vascular Endothelial Growth Factor Receptor 1-Tyr1048 (980-1060) is suitable for use in Western Blot, Immunohistochemistry, Immunofluorescence and ELISA research applications.
Applications	WB, IHC-P, IF-P, ELISA
Host/Source	Rabbit
Reactivity	Human, Mouse, Rat

PRODUCT PROPERTIES

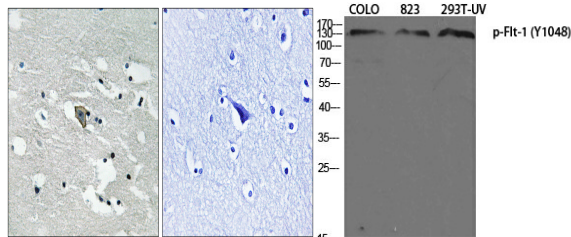
Clonality	Polyclonal
Clone ID	
Concentration	1 mg/mL
Conjugation	Unconjugated
Purification	The antibody was affinity-purified from rabbit anti-serum by affinity-chromatography.
Dilution	IHC 1:100-1:300
Range	ELISA 1:5000
Formulation	PBS, 50% Glycerol, 0.5% BSA and 0.02% Sodium Azide.
Isotype	IgG
Storage	Store at -20°C for up to 1 year from the date of receipt, and avoid repeat freeze-thaw cycles.
Instruction	

TARGET INFORMATION

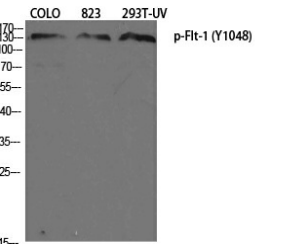
Gene ID	2321
Gene Symbol	FLT1
Uniprot ID	VGFR1_HUMAN
Immunogen	The antiserum was produced against synthesized peptide derived from human VEGFR1 around the phosphorylation site of Tyr1048 at amino acid range 1016-1065
Immunogen Region	980-1060
Specificity	Phospho-FLT1-Tyr1048 polyclonal antibody (Vascular Endothelial Growth Factor Receptor 1) binds to endogenous Vascular Endothelial Growth Factor Receptor 1 at the amino acid region 980-1060 only when phosphorylated at Tyr1048.
Immunogen Sequence	



Western blot analysis of 293T lysis using Phospho-Flt-1 (Y1048) antibody. Antibody was diluted at 1:1000



Immunohistochemistry analysis of paraffin-embedded human brain, using VEGFR1 (Phospho-Tyr1048) Antibody. The picture on the right is blocked with the phospho-peptide.



Western blot analysis of various cells using Phospho-Flt-1 (Y1048) Polyclonal Antibody diluted at 1: 1000