

Anti-Phospho-RAF1-Thr269 antibody (200-280) (STJ91217)

STJ91217

GENERAL INFORMATION

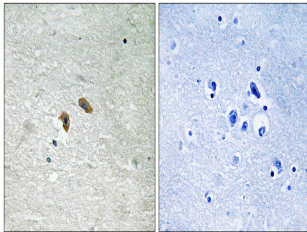
Product Type	Primary antibodies
Short Description	Rabbit polyclonal antibody anti-Phospho-Raf Proto-Oncogene Serine/Threonine-Protein Kinase-Thr269 (200-280) is suitable for use in Immunohistochemistry, Immunofluorescence and ELISA research applications.
Applications	IHC-P, IF-P, ELISA
Host/Source	Rabbit
Reactivity	Human, Mouse, Rat

PRODUCT PROPERTIES

Clonality	Polyclonal
Clone ID	
Concentration	1 mg/mL
Conjugation	Unconjugated
Purification	The antibody was affinity-purified from rabbit anti-serum by affinity-chromatography.
Dilution	IHC 1:100-1:300
Range	ELISA 1:40000
Formulation	PBS, 50% Glycerol, 0.5% BSA and 0.02% Sodium Azide.
Isotype	IgG
Storage Instruction	Store at -20°C for up to 1 year from the date of receipt, and avoid repeat freeze-thaw cycles.

TARGET INFORMATION

Gene ID	5894
Gene Symbol	RAF1
Uniprot ID	RAF1_HUMAN
Immunogen	The antiserum was produced against synthesized peptide derived from human C-RAF around the phosphorylation site of Thr269 at amino acid range 231-280
Immunogen Region	200-280
Specificity	Phospho-RAF1-Thr269 polyclonal antibody (Raf Proto-Oncogene Serine/Threonine-Protein Kinase) binds to endogenous Raf Proto-Oncogene Serine/Threonine-Protein Kinase at the amino acid region 200-280 only when phosphorylated at Thr269.
Immunogen Sequence	



Immunohistochemistry analysis of paraffin-embedded human brain, using C-RAF (Phospho-Thr269) Antibody. The picture on the right is blocked with the phospho peptide.