

Anti-Phospho-MLK1/2-Thr312/266 antibody (250-330) (STJ91210)

STJ91210

GENERAL INFORMATION

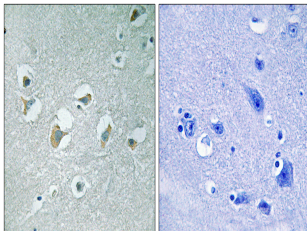
Product Type	Primary antibodies
Short Description	Rabbit polyclonal antibody anti-Phospho-Mitogen-activated protein kinase kinase kinase 9 and Mitogen-activated protein kinase kinase kinase 10-Thr312/266 (250-330) is suitable for use in Immunohistochemistry, Immunofluorescence and ELISA research app
Applications	IHC-P, IF-P, ELISA
Host/Source	Rabbit
Reactivity	Human, Mouse

PRODUCT PROPERTIES

Clonality	Polyclonal
Clone ID	
Concentration	1 mg/mL
Conjugation	Unconjugated
Purification	The antibody was affinity-purified from rabbit anti-serum by affinity-chromatography.
Dilution	IHC 1:100-1:300
Range	ELISA 1:5000
Formulation	PBS, 50% Glycerol, 0.5% BSA and 0.02% Sodium Azide.
Isotype	IgG
Storage	Store at -20°C for up to 1 year from the date of receipt, and avoid repeat freeze-thaw cycles.
Instruction	

TARGET INFORMATION

Gene ID	4293 4294
Gene Symbol	MAP3K9 MAP3K10
Uniprot ID	M3K9_HUMAN M3K10_HUMAN
Immunogen	The antiserum was produced against synthesized peptide derived from human MLK1/2 around the phosphorylation site of Thr312/266 at amino acid range 281-330
Immunogen Region	250-330
Specificity	Phospho-MLK1/2-Thr312/266 polyclonal antibody (Mitogen-activated protein kinase kinase kinase 9 and Mitogen-activated protein kinase kinase kinase 10) binds to endogenous Mitogen-activated protein kinase kinase kinase 9 and Mitogen-activated protein
Immunogen Sequence	



Immunohistochemistry analysis of paraffin-embedded human brain, using MLK1/2 (Phospho-Thr312/266) Antibody. The picture on the right is blocked with the phospho peptide.

This product is suitable for in-vitro studies under the RESEARCH USE ONLY [RUO] licence. This product must not be used as for diagnostic or other medical purposes.
St John's Laboratory Ltd, Knowledge Dock Business Centre, University Way, London, E16 2RD | Tel: 0208 223 3081