

Anti-Phospho-MAP3K8-Ser400 antibody (340-420) (STJ91209)

STJ91209

GENERAL INFORMATION

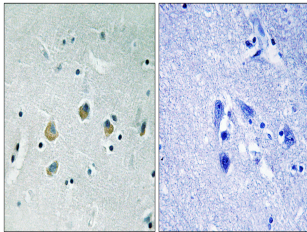
Product Type	Primary antibodies
Short Description	Rabbit polyclonal antibody anti-Phospho-Mitogen-Activated Protein Kinase Kinase Kinase 8-Ser400 (340-420) is suitable for use in Immunohistochemistry, Immunofluorescence and ELISA research applications.
Applications	IHC-P, IF-P, ELISA
Host/Source	Rabbit
Reactivity	Human, Mouse, Rat

PRODUCT PROPERTIES

Clonality	Polyclonal
Clone ID	
Concentration	1 mg/mL
Conjugation	Unconjugated
Purification	The antibody was affinity-purified from rabbit anti-serum by affinity-chromatography.
Dilution	IHC 1:100-1:300
Range	ELISA 1:5000
Formulation	PBS, 50% Glycerol, 0.5% BSA and 0.02% Sodium Azide.
Isotype	IgG
Storage	Store at -20°C for up to 1 year from the date of receipt, and avoid repeat freeze-thaw cycles.
Instruction	

TARGET INFORMATION

Gene ID	1326
Gene Symbol	MAP3K8
Uniprot ID	M3K8_HUMAN
Immunogen	The antiserum was produced against synthesized peptide derived from human MAP3K8 around the phosphorylation site of Ser400 at amino acid range 366-415
Immunogen Region	340-420
Specificity	Phospho-MAP3K8-Ser400 polyclonal antibody (Mitogen-Activated Protein Kinase Kinase Kinase 8) binds to endogenous Mitogen-Activated Protein Kinase Kinase Kinase 8 at the amino acid region 340-420 only when phosphorylated at Ser400.
Immunogen Sequence	



Immunohistochemistry analysis of paraffin-embedded human brain, using MAP3K8 (Phospho-Ser400) Antibody. The picture on the right is blocked with the phospho peptide.