

Anti-Phospho-LATS1/2-Thr1079/1041 antibody (1010-1090) (STJ91207)

STJ91207

GENERAL INFORMATION

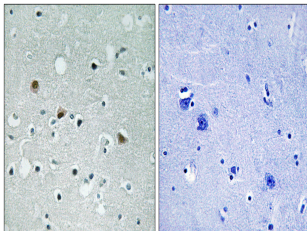
Product Type	Primary antibodies
Short Description	Rabbit polyclonal antibody anti-Phospho-Serine/threonine-protein kinase LATS1 and Serine/threonine-protein kinase LATS2-Thr1079/1041 (1010-1090) is suitable for use in Immunohistochemistry, Immunofluorescence and ELISA research applications.
Applications	IHC-P, IF-P, ELISA
Host/Source	Rabbit
Reactivity	Human, Mouse

PRODUCT PROPERTIES

Clonality	Polyclonal
Clone ID	
Concentration	1 mg/mL
Conjugation	Unconjugated
Purification	The antibody was affinity-purified from rabbit anti-serum by affinity-chromatography.
Dilution	IHC 1:100-1:300
Range	ELISA 1:20000
Formulation	PBS, 50% Glycerol, 0.5% BSA and 0.02% Sodium Azide.
Isotype	IgG
Storage	Store at -20°C for up to 1 year from the date of receipt, and avoid repeat freeze-thaw cycles.
Instruction	

TARGET INFORMATION

Gene ID	9113 26524
Gene Symbol	LATS1 LATS2
Uniprot ID	LATS1_HUMAN LATS2_HUMAN
Immunogen	The antiserum was produced against synthesized peptide derived from human LATS1/2 around the phosphorylation site of Thr1079/1041 at amino acid range 1041-1090
Immunogen Region	1010-1090
Specificity	Phospho-LATS1/2-Thr1079/1041 polyclonal antibody (Serine/threonine-protein kinase LATS1 and Serine/threonine-protein kinase LATS2) binds to endogenous Serine/threonine-protein kinase LATS1 and Serine/threonine-protein kinase LATS2 at the amino acid r
Immunogen Sequence	



Immunohistochemistry analysis of paraffin-embedded human brain, using LATS1/2 (Phospho-Thr1079/1041) Antibody. The picture on the right is blocked with the phospho peptide.

This product is suitable for in-vitro studies under the RESEARCH USE ONLY [RUO] licence. This product must not be used as for diagnostic or other medical purposes.
St John's Laboratory Ltd, Knowledge Dock Business Centre, University Way, London, E16 2RD | Tel: 0208 223 3081