

Anti-Phospho-ILK-Ser246 antibody (180-260) (STJ91204)

STJ91204

GENERAL INFORMATION

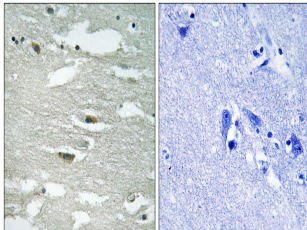
Product Type	Primary antibodies
Short Description	Rabbit polyclonal antibody anti-Phospho-Integrin-Linked Protein Kinase-Ser246 (180-260) is suitable for use in Immunohistochemistry, Immunofluorescence and ELISA research applications.
Applications	IHC-P, IF-P, ELISA
Host/Source	Rabbit
Reactivity	Human, Mouse, Rat

PRODUCT PROPERTIES

Clonality	Polyclonal
Clone ID	
Concentration	1 mg/mL
Conjugation	Unconjugated
Purification	The antibody was affinity-purified from rabbit anti-serum by affinity-chromatography.
Dilution	IHC 1:100-1:300
Range	ELISA 1:5000
Formulation	PBS, 50% Glycerol, 0.5% BSA and 0.02% Sodium Azide.
Isotype	IgG
Storage	Store at -20°C for up to 1 year from the date of receipt, and avoid repeat freeze-thaw cycles.
Instruction	

TARGET INFORMATION

Gene ID	3611
Gene Symbol	ILK
Uniprot ID	ILK_HUMAN
Immunogen	The antiserum was produced against synthesized peptide derived from human ILK around the phosphorylation site of Ser246 at amino acid range 212-261
Immunogen Region	180-260
Specificity	Phospho-ILK-Ser246 polyclonal antibody (Integrin-Linked Protein Kinase) binds to endogenous Integrin-Linked Protein Kinase at the amino acid region 180-260 only when phosphorylated at Ser246.
Immunogen Sequence	



Immunohistochemistry analysis of paraffin-embedded human brain, using ILK (Phospho-Ser246) Antibody. The picture on the right is blocked with the phospho peptide.