

Anti-Phospho-IKBKG-Ser376 antibody (320-400) (STJ91203)

STJ91203

GENERAL INFORMATION

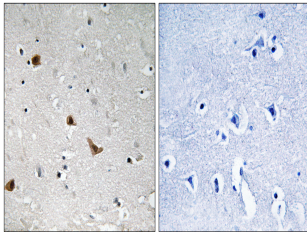
Product Type	Primary antibodies
Short Description	Rabbit polyclonal antibody anti-Phospho-Nf-Kappa-B Essential Modulator-Ser376 (320-400) is suitable for use in Immunohistochemistry, Immunofluorescence and ELISA research applications.
Applications	IHC-P, IF-P, ELISA
Host/Source	Rabbit
Reactivity	Human, Rat, Mouse

PRODUCT PROPERTIES

Clonality	Polyclonal
Clone ID	
Concentration	1 mg/mL
Conjugation	Unconjugated
Purification	The antibody was affinity-purified from rabbit anti-serum by affinity-chromatography.
Dilution	IHC 1:100-1:300
Range	ELISA 1:5000
Formulation	PBS, 50% Glycerol, 0.5% BSA and 0.02% Sodium Azide.
Isotype	IgG
Storage Instruction	Store at -20°C for up to 1 year from the date of receipt, and avoid repeat freeze-thaw cycles.

TARGET INFORMATION

Gene ID	8517
Gene Symbol	IKBKG
Uniprot ID	NEMO_HUMAN
Immunogen	The antiserum was produced against synthesized peptide derived from human IKK-gamma around the phosphorylation site of Ser376 at amino acid range 342-391
Immunogen Region	320-400
Specificity	Phospho-IKBKG-Ser376 polyclonal antibody (Nf-Kappa-B Essential Modulator) binds to endogenous Nf-Kappa-B Essential Modulator at the amino acid region 320-400 only when phosphorylated at Ser376.
Immunogen Sequence	



Immunohistochemistry analysis of paraffin-embedded human brain, using IKK-gamma (Phospho-Ser376) Antibody. The picture on the right is blocked with the phospho peptide.