

Anti-Phospho-EphA3/4/5-Tyr779/833 antibody (720-800) (STJ91201)

STJ91201

GENERAL INFORMATION

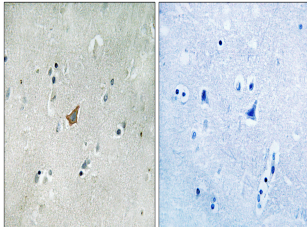
Product Type	Primary antibodies
Short Description	Rabbit polyclonal antibody anti-Phospho-Ephrin type-A receptor 3 and Ephrin type-A receptor 4 and Ephrin type-A receptor 5-Tyr779/833 (720-800) is suitable for use in Immunohistochemistry, Immunofluorescence and ELISA research applications.
Applications	IHC-P, IF-P, ELISA
Host/Source	Rabbit
Reactivity	Human, Mouse, Rat

PRODUCT PROPERTIES

Clonality	Polyclonal
Clone ID	
Concentration	1 mg/mL
Conjugation	Unconjugated
Purification	The antibody was affinity-purified from rabbit anti-serum by affinity-chromatography.
Dilution	IHC 1:100-1:300
Range	ELISA 1:10000
Formulation	PBS, 50% Glycerol, 0.5% BSA and 0.02% Sodium Azide.
Isotype	IgG
Storage	Store at -20°C for up to 1 year from the date of receipt, and avoid repeat freeze-thaw cycles.
Instruction	

TARGET INFORMATION

Gene ID	2042 2044 2043 EPHA3 EPHA5 EPHA3_HUMAN EPHA5_HUMAN EPHA4_HUMAN
Immunogen	The antiserum was produced against synthesized peptide derived from human EPHA3/4/5 around the phosphorylation site of Tyr779/833 at amino acid range 746-795
Immunogen Region	720-800
Specificity	Phospho-EphA3/4/5-Tyr779/833 polyclonal antibody (Ephrin type-A receptor 3 and Ephrin type-A receptor 4 and Ephrin type-A receptor 5) binds to endogenous Ephrin type-A receptor 3 and Ephrin type-A receptor 4 and Ephrin type-A receptor 5 at the amino
Immunogen Sequence	



Immunohistochemistry analysis of paraffin-embedded human brain, using EPHA3/4/5 (Phospho-Tyr779/833) Antibody. The picture on the right is blocked with the phospho peptide.

This product is suitable for in-vitro studies under the RESEARCH USE ONLY [RUO] licence. This product must not be used as for diagnostic or other medical purposes.
 St John's Laboratory Ltd, Knowledge Dock Business Centre, University Way, London, E16 2RD | Tel: 0208 223 3081