

## Anti-Phospho-Casein Kinase I Gamma 1/2/3-Tyr263 antibody (200-280) (STJ91200)

STJ91200

### GENERAL INFORMATION

<b>Product Type</b>	Primary antibodies
<b>Short Description</b>	Rabbit polyclonal antibody anti-Phospho-Casein kinase I isoform gamma-1 and Casein kinase I isoform gamma-2 and Casein kinase I isoform gamma-3-Tyr263 (200-280) is suitable for use in Immunohistochemistry, Immunofluorescence and ELISA research applic
<b>Applications</b>	IHC-P, IF-P, ELISA
<b>Host/Source</b>	Rabbit
<b>Reactivity</b>	Human, Mouse, Rat

### PRODUCT PROPERTIES

<b>Clonality</b>	Polyclonal
<b>Clone ID</b>	
<b>Concentration</b>	1 mg/mL
<b>Conjugation</b>	Unconjugated
<b>Purification</b>	The antibody was affinity-purified from rabbit anti-serum by affinity-chromatography.
<b>Dilution</b>	IHC 1:100-1:300
<b>Range</b>	ELISA 1:20000
<b>Formulation</b>	PBS, 50% Glycerol, 0.5% BSA and 0.02% Sodium Azide.
<b>Isotype</b>	IgG
<b>Storage</b>	Store at -20°C for up to 1 year from the date of receipt, and avoid repeat freeze-thaw cycles.
<b>Instruction</b>	

### TARGET INFORMATION

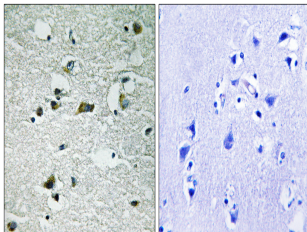
**Gene ID** [53944](#)  
[1455](#)  
[1456](#)  
[CSNK1G1](#)  
[CSNK1G2](#)  
[KC1G1\\_HUMAN](#)  
[KC1G2\\_HUMAN](#)  
[KC1G3\\_HUMAN](#)

**Immunogen** The antiserum was produced against synthesized peptide derived from human CK-1 gamma1/2/3 around the phosphorylation site of Tyr263 at amino acid range 229-278

**Immunogen Region** 200-280

**Specificity** Phospho-Casein Kinase I Gamma 1/2/3-Tyr263 polyclonal antibody (Casein kinase I isoform gamma-1 and Casein kinase I isoform gamma-2 and Casein kinase I isoform gamma-3) binds to endogenous Casein kinase I isoform gamma-1 and Casein kinase I isoform g

**Immunogen Sequence**



Immunohistochemistry analysis of paraffin-embedded human brain, using CK-1 gamma1/2/3 (Phospho-Tyr263) Antibody. The picture on the right is blocked with the phospho-peptide.