

Anti-Phospho-LIMK2-Ser283 antibody (220-300) (STJ91188)

STJ91188

GENERAL INFORMATION

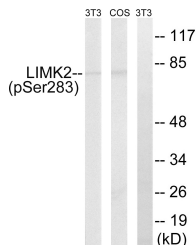
Product Type	Primary antibodies
Short Description	Rabbit polyclonal antibody anti-Phospho-Lim Domain Kinase 2-Ser283 (220-300) is suitable for use in Western Blot, Immunohistochemistry, Immunofluorescence and ELISA research applications.
Applications	WB, IHC-P, IF-P, ELISA
Host/Source	Rabbit
Reactivity	Human, Mouse, Rat, Monkey

PRODUCT PROPERTIES

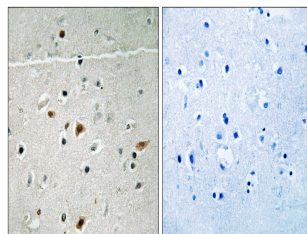
Clonality	Polyclonal
Clone ID	
Concentration	1 mg/mL
Conjugation	Unconjugated
Purification	The antibody was affinity-purified from rabbit anti-serum by affinity-chromatography.
Dilution Range	WB 1:500-1:2000 IHC 1:100-1:300 ELISA 1:5000
Formulation	PBS, 50% Glycerol, 0.5% BSA and 0.02% Sodium Azide.
Isotype	IgG
Storage Instruction	Store at -20°C for up to 1 year from the date of receipt, and avoid repeat freeze-thaw cycles.

TARGET INFORMATION

Gene ID	3985
Gene Symbol	LIMK2
Uniprot ID	LIMK2_HUMAN
Immunogen	The antiserum was produced against synthesized peptide derived from human LIMK2 around the phosphorylation site of Ser283 at amino acid range 249-298
Immunogen Region	220-300
Specificity	Phospho-LIMK2-Ser283 polyclonal antibody (Lim Domain Kinase 2) binds to endogenous Lim Domain Kinase 2 at the amino acid region 220-300 only when phosphorylated at Ser283.
Immunogen Sequence	



Western blot analysis of LIMK2 (Phospho-Ser283) Antibody. The lane on the right is blocked with the LIMK2 (Phospho-Ser283) peptide.



Immunohistochemistry analysis of paraffin-embedded human brain, using LIMK2 (Phospho-Ser283) Antibody. The picture on the right is blocked with the phospho peptide.