

Anti-Phospho-IGF1R-Tyr1346 antibody (1280-1360) (STJ91187)

STJ91187

GENERAL INFORMATION

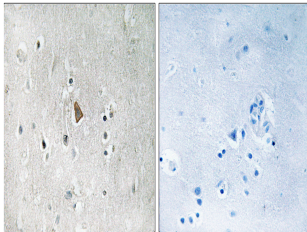
Product Type	Primary antibodies
Short Description	Rabbit polyclonal antibody anti-Phospho-Insulin-Like Growth Factor 1 Receptor-Tyr1346 (1280-1360) is suitable for use in Immunohistochemistry, Immunofluorescence and ELISA research applications.
Applications	IHC-P, IF-P, ELISA
Host/Source	Rabbit
Reactivity	Human, Mouse, Rat

PRODUCT PROPERTIES

Clonality	Polyclonal
Clone ID	
Concentration	1 mg/mL
Conjugation	Unconjugated
Purification	The antibody was affinity-purified from rabbit anti-serum by affinity-chromatography.
Dilution	IHC 1:100-1:300
Range	ELISA 1:40000
Formulation	PBS, 50% Glycerol, 0.5% BSA and 0.02% Sodium Azide.
Isotype	IgG
Storage	Store at -20°C for up to 1 year from the date of receipt, and avoid repeat freeze-thaw cycles.
Instruction	

TARGET INFORMATION

Gene ID	3480
Gene Symbol	IGF1R
Uniprot ID	IGF1R_HUMAN
Immunogen	The antiserum was produced against synthesized peptide derived from human IGF1R around the phosphorylation site of Tyr1346 at amino acid range 1311-1360
Immunogen Region	1280-1360
Specificity	Phospho-IGF1R-Tyr1346 polyclonal antibody (Insulin-Like Growth Factor 1 Receptor) binds to endogenous Insulin-Like Growth Factor 1 Receptor at the amino acid region 1280-1360 only when phosphorylated at Tyr1346.
Immunogen Sequence	



Immunohistochemistry analysis of paraffin-embedded human brain, using IGF1R (Phospho-Tyr1346) Antibody. The picture on the right is blocked with the phosphopeptide.