

Anti-Phospho-NR4A1-Ser351 antibody (290-370) (STJ91179)

STJ91179

GENERAL INFORMATION

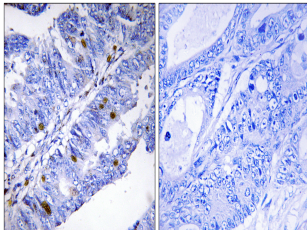
Product Type	Primary antibodies
Short Description	Rabbit polyclonal antibody anti-Phospho-Nuclear Receptor Subfamily 4 Group A Member 1-Ser351 (290-370) is suitable for use in Western Blot, Immunohistochemistry, Immunofluorescence and ELISA research applications.
Applications	WB, IHC-P, IF-P, ELISA
Host/Source	Rabbit
Reactivity	Human, Mouse, Rat

PRODUCT PROPERTIES

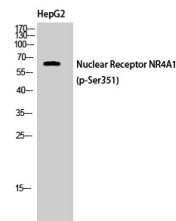
Clonality	Polyclonal
Clone ID	
Concentration	1 mg/mL
Conjugation	Unconjugated
Purification	The antibody was affinity-purified from rabbit anti-serum by affinity-chromatography.
Dilution	IHC 1:100-1:300
Range	ELISA 1:40000
Formulation	PBS, 50% Glycerol, 0.5% BSA and 0.02% Sodium Azide.
Isotype	IgG
Storage	Store at -20°C for up to 1 year from the date of receipt, and avoid repeat freeze-thaw cycles.
Instruction	

TARGET INFORMATION

Gene ID	3164
Gene Symbol	NR4A1
Uniprot ID	NR4A1_HUMAN
Immunogen	The antiserum was produced against synthesized peptide derived from human Nuclear Receptor NR4A1 around the phosphorylation site of Ser351 at amino acid range 317-366
Immunogen Region	290-370
Specificity	Phospho-NR4A1-Ser351 polyclonal antibody (Nuclear Receptor Subfamily 4 Group A Member 1) binds to endogenous Nuclear Receptor Subfamily 4 Group A Member 1 at the amino acid region 290-370 only when phosphorylated at Ser351.
Immunogen Sequence	



Immunohistochemistry analysis of paraffin-embedded human colon carcinoma, using Nuclear Receptor NR4A1 (Phospho-Ser351) Antibody. The picture on the right is blocked with the phospho peptide.



Western blot analysis of HepG2 cells using Phospho-Nur77 (S351) Polyclonal Antibody cells nucleus extracted by Minute TM Cytoplasmic and Nuclear Fractionation kit (SC-003, Inventibiotec, MN, USA).

This product is suitable for in-vitro studies under the RESEARCH USE ONLY [RUO] licence. This product must not be used as for diagnostic or other medical purposes.
 St John's Laboratory Ltd, Knowledge Dock Business Centre, University Way, London, E16 2RD | Tel: 0208 223 3081