

Anti-Phospho-NCF1-Ser328 antibody (270-350) (STJ91178)

STJ91178

GENERAL INFORMATION

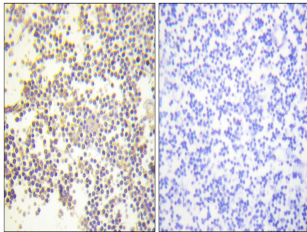
Product Type	Primary antibodies
Short Description	Rabbit polyclonal antibody anti-Phospho-Neutrophil Cytosol Factor 1-Ser328 (270-350) is suitable for use in Western Blot, Immunohistochemistry, Immunofluorescence and ELISA research applications.
Applications	WB, IHC-P, IF-P, ELISA
Host/Source	Rabbit
Reactivity	Human, Mouse, Rat

PRODUCT PROPERTIES

Clonality	Polyclonal
Clone ID	
Concentration	1 mg/mL
Conjugation	Unconjugated
Purification	The antibody was affinity-purified from rabbit anti-serum by affinity-chromatography.
Dilution	IHC 1:100-1:300
Range	ELISA 1:10000
Formulation	PBS, 50% Glycerol, 0.5% BSA and 0.02% Sodium Azide.
Isotype	IgG
Storage	Store at -20°C for up to 1 year from the date of receipt, and avoid repeat freeze-thaw cycles.
Instruction	

TARGET INFORMATION

Gene ID	653361
Gene Symbol	NCF1
Uniprot ID	NCF1_HUMAN
Immunogen	The antiserum was produced against synthesized peptide derived from human Neutrophil Cytosol Factor 1 around the phosphorylation site of Ser328 at amino acid range 301-350
Immunogen Region	270-350
Specificity	Phospho-NCF1-Ser328 polyclonal antibody (Neutrophil Cytosol Factor 1) binds to endogenous Neutrophil Cytosol Factor 1 at the amino acid region 270-350 only when phosphorylated at Ser328.
Immunogen Sequence	



Immunohistochemistry analysis of paraffin-embedded human tonsil using Neutrophil Cytosol Factor 1 (Phospho-Ser328) Antibody. The picture on the right is blocked with the phospho peptide.