

Anti-Phospho-AURKA-Ser342 antibody (280-360) (STJ91174)

STJ91174

GENERAL INFORMATION

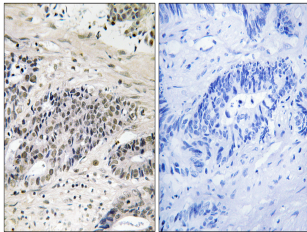
Product Type	Primary antibodies
Short Description	Rabbit polyclonal antibody anti-Phospho-Aurora Kinase A-Ser342 (280-360) is suitable for use in Immunohistochemistry, Immunofluorescence and ELISA research applications.
Applications	IHC-P, IF-P, ELISA
Host/Source	Rabbit
Reactivity	Human, Mouse, Rat

PRODUCT PROPERTIES

Clonality	Polyclonal
Clone ID	
Concentration	1 mg/mL
Conjugation	Unconjugated
Purification	The antibody was affinity-purified from rabbit anti-serum by affinity-chromatography.
Dilution Range	IHC 1:100-1:300 ELISA 1:10000
Formulation	PBS, 50% Glycerol, 0.5% BSA and 0.02% Sodium Azide.
Isotype	IgG
Storage	Store at -20°C for up to 1 year from the date of receipt, and avoid repeat freeze-thaw cycles.
Instruction	

TARGET INFORMATION

Gene ID	6790
Gene Symbol	AURKA
Uniprot ID	AURKA_HUMAN
Immunogen	The antiserum was produced against synthesized peptide derived from human AurA around the phosphorylation site of Ser342 at amino acid range 311-360
Immunogen Region	280-360
Specificity	Phospho-AURKA-Ser342 polyclonal antibody (Aurora Kinase A) binds to endogenous Aurora Kinase A at the amino acid region 280-360 only when phosphorylated at Ser342.
Immunogen Sequence	



Immunohistochemistry analysis of paraffin-embedded human colon carcinoma, using AurA (Phospho-Ser342) Antibody. The picture on the right is blocked with the phospho peptide.