

Anti-Phospho-DUSP1-Ser359 antibody (300-380) (STJ91170)

STJ91170

GENERAL INFORMATION

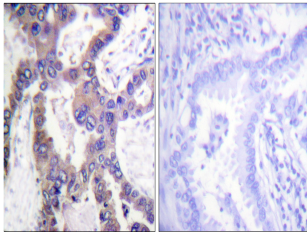
Product Type	Primary antibodies
Short Description	Rabbit polyclonal antibody anti-Phospho-Dual Specificity Protein Phosphatase 1-Ser359 (300-380) is suitable for use in Immunohistochemistry, Immunofluorescence and ELISA research applications.
Applications	IHC-P, IF-P, ELISA
Host/Source	Rabbit
Reactivity	Human, Rat, Mouse

PRODUCT PROPERTIES

Clonality	Polyclonal
Clone ID	
Concentration	1 mg/mL
Conjugation	Unconjugated
Purification	The antibody was affinity-purified from rabbit anti-serum by affinity-chromatography.
Dilution	IHC 1:100-1:300
Range	ELISA 1:10000
Formulation	PBS, 50% Glycerol, 0.5% BSA and 0.02% Sodium Azide.
Isotype	IgG
Storage	Store at -20°C for up to 1 year from the date of receipt, and avoid repeat freeze-thaw cycles.
Instruction	

TARGET INFORMATION

Gene ID	1843
Gene Symbol	DUSP1
Uniprot ID	DUS1_HUMAN
Immunogen	The antiserum was produced against synthesized peptide derived from human MKP1 around the phosphorylation site of Ser359 at amino acid range 318-367
Immunogen Region	300-380
Specificity	Phospho-DUSP1-Ser359 polyclonal antibody (Dual Specificity Protein Phosphatase 1) binds to endogenous Dual Specificity Protein Phosphatase 1 at the amino acid region 300-380 only when phosphorylated at Ser359.
Immunogen Sequence	



Immunohistochemistry analysis of paraffin-embedded human lung carcinoma, using MKP1 (Phospho-Ser359) Antibody. The picture on the right is blocked with the phospho peptide.