

## Anti-Phospho-KCNQ2/3/4/5-Thr217/246/223/251 antibody (160-240) (STJ91166)

STJ91166

### GENERAL INFORMATION

<b>Product Type</b>	Primary antibodies
<b>Short Description</b>	Rabbit polyclonal antibody anti-Phospho-Potassium voltage-gated channel subfamily KQT member 2 and Potassium voltage-gated channel subfamily KQT member 3 and Potassium voltage-gated channel subfamily KQT member 4 and Potassium voltage-gated channel s
<b>Applications</b>	WB, IHC-P, IF-P, ELISA
<b>Host/Source</b>	Rabbit
<b>Reactivity</b>	Human, Mouse, Rat

### PRODUCT PROPERTIES

<b>Clonality</b>	Polyclonal
<b>Clone ID</b>	
<b>Concentration</b>	1 mg/mL
<b>Conjugation</b>	Unconjugated
<b>Purification</b>	The antibody was affinity-purified from rabbit anti-serum by affinity-chromatography.
<b>Dilution Range</b>	IHC 1:100-1:300 ELISA 1:20000
<b>Formulation</b>	PBS, 50% Glycerol, 0.5% BSA and 0.02% Sodium Azide.
<b>Isotype</b>	IgG
<b>Storage Instruction</b>	Store at -20°C for up to 1 year from the date of receipt, and avoid repeat freeze-thaw cycles.

### TARGET INFORMATION

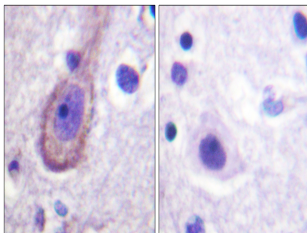
**Gene ID** [56479](#)  
[3785](#)  
[3786](#)  
[KCNQ5](#)  
[KCNQ2](#)  
[KCNQ5\\_HUMAN](#)  
[KCNQ2\\_HUMAN](#)  
[KCNQ3\\_HUMAN](#)

**Immunogen** The antiserum was produced against synthesized peptide derived from human Kv7.3/KCNQ3 around the phosphorylation site of Thr246 at amino acid range 191-240

**Immunogen Region** 160-240

**Specificity** Phospho-KCNQ2/3/4/5-Thr217/246/223/251 polyclonal antibody (Potassium voltage-gated channel subfamily KQT member 2 and Potassium voltage-gated channel subfamily KQT member 3 and Potassium voltage-gated channel subfamily KQT member 4 and Potassium vol

**Immunogen Sequence**



Immunohistochemistry analysis of paraffin-embedded human brain, using Kv7.3/KCNQ3 (Phospho-Thr246) Antibody. The picture on the right is blocked with the phospho peptide.