

Anti-Phospho-ACO1-Ser138 antibody (80-160) (STJ91163)

STJ91163

GENERAL INFORMATION

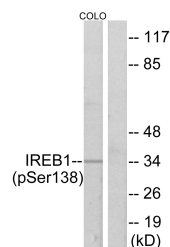
Product Type	Primary antibodies
Short Description	Rabbit polyclonal antibody anti-Phospho-Cytoplasmic Aconitate Hydratase-Ser138 (80-160) is suitable for use in Immunohistochemistry, Immunofluorescence, Immunocytochemistry and ELISA research applications.
Applications	IHC-P, IF, ICC, ELISA
Host/Source	Rabbit
Reactivity	Human, Mouse, Rat

PRODUCT PROPERTIES

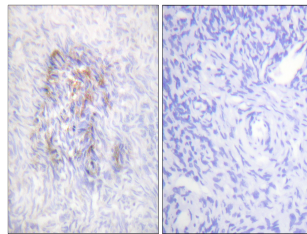
Clonality	Polyclonal
Clone ID	
Concentration	1 mg/mL
Conjugation	Unconjugated
Purification	The antibody was affinity-purified from rabbit anti-serum by affinity-chromatography.
Dilution	WB 1:500-2000
Range	IHC 1:100-1:300 IF 1:200-1:1000 ELISA 1:10000
Formulation	PBS, 50% Glycerol, 0.5% BSA and 0.02% Sodium Azide.
Isotype	IgG
Storage Instruction	Store at -20°C for up to 1 year from the date of receipt, and avoid repeat freeze-thaw cycles.

TARGET INFORMATION

Gene ID	48
Gene Symbol	ACO1
Uniprot ID	ACOHC_HUMAN
Immunogen	The antiserum was produced against synthesized peptide derived from human IREB1 around the phosphorylation site of Ser138 at amino acid range 106-155
Immunogen Region	80-160
Specificity	Phospho-ACO1-Ser138 polyclonal antibody (Cytoplasmic Aconitate Hydratase) binds to endogenous Cytoplasmic Aconitate Hydratase at the amino acid region 80-160 only when phosphorylated at Ser138.
Immunogen Sequence	



Western blot analysis of IREB1 (Phospho-Ser138) Antibody. The lane on the right is blocked with the IREB1 (Phospho-Ser138) peptide.



Immunohistochemistry analysis of paraffin-embedded human ovary, using IREB1 (Phospho-Ser138) Antibody. The picture on the right is blocked with the phospho peptide.