

Anti-Phospho-IL1R1-Tyr496 antibody (440-520) (STJ91162)

STJ91162

GENERAL INFORMATION

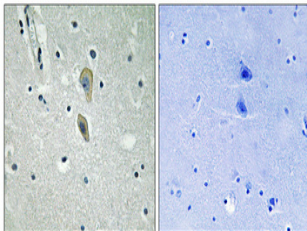
Product Type	Primary antibodies
Short Description	Rabbit polyclonal antibody anti-Phospho-Interleukin-1 Receptor Type 1-Tyr496 (440-520) is suitable for use in Western Blot, Immunohistochemistry, Immunofluorescence and ELISA research applications.
Applications	WB, IHC-P, IF-P, ELISA
Host/Source	Rabbit
Reactivity	Human, Mouse, Rat

PRODUCT PROPERTIES

Clonality	Polyclonal
Clone ID	
Concentration	1 mg/mL
Conjugation	Unconjugated
Purification	The antibody was affinity-purified from rabbit anti-serum by affinity-chromatography.
Dilution Range	WB 1:500-1:2000 IHC 1:100-1:300 ELISA 1:10000
Formulation	PBS, 50% Glycerol, 0.5% BSA and 0.02% Sodium Azide.
Isotype	IgG
Storage Instruction	Store at -20°C for up to 1 year from the date of receipt, and avoid repeat freeze-thaw cycles.

TARGET INFORMATION

Gene ID	3554
Gene Symbol	IL1R1
Uniprot ID	IL1R1_HUMAN
Immunogen	The antiserum was produced against synthesized peptide derived from human IL-1Ralpha/CD121alpha around the phosphorylation site of Tyr496 at amino acid range 471-520
Immunogen Region	440-520
Specificity	Phospho-IL1R1-Tyr496 polyclonal antibody (Interleukin-1 Receptor Type 1) binds to endogenous Interleukin-1 Receptor Type 1 at the amino acid region 440-520 only when phosphorylated at Tyr496.
Immunogen Sequence	



Immunohistochemical analysis of paraffin-embedded Human brain. Antibody was diluted at 1:100 (4°C overnight). High-pressure and temperature Tris-EDTA, pH8.0 was used for antigen retrieval. Negative control (right) obtained from antibody was pre-absorbed by immunogen peptide.