

Anti-Phospho-CASP2-Ser157 antibody (100-180) (STJ91157)

STJ91157

GENERAL INFORMATION

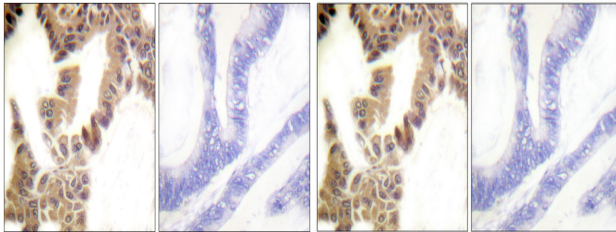
Product Type	Primary antibodies
Short Description	Rabbit polyclonal antibody anti-Phospho-Caspase-2-Ser157 (100-180) is suitable for use in Immunohistochemistry, Immunofluorescence and ELISA research applications.
Applications	IHC-P, IF-P, ELISA
Host/Source	Rabbit
Reactivity	Human, Rat, Mouse

PRODUCT PROPERTIES

Clonality	Polyclonal
Clone ID	
Concentration	1 mg/mL
Conjugation	Unconjugated
Purification	The antibody was affinity-purified from rabbit anti-serum by affinity-chromatography.
Dilution Range	IHC 1:100-1:300 ELISA 1:10000
Formulation	PBS, 50% Glycerol, 0.5% BSA and 0.02% Sodium Azide.
Isotype	IgG
Storage	Store at -20°C for up to 1 year from the date of receipt, and avoid repeat freeze-thaw cycles.
Instruction	

TARGET INFORMATION

Gene ID	835
Gene Symbol	CASP2
Uniprot ID	CASP2_HUMAN
Immunogen	The antiserum was produced against synthesized peptide derived from human Caspase 2 around the phosphorylation site of Ser157 at amino acid range 123-172
Immunogen Region	100-180
Specificity	Phospho-CASP2-Ser157 polyclonal antibody (Caspase-2) binds to endogenous Caspase-2 at the amino acid region 100-180 only when phosphorylated at Ser157.
Immunogen Sequence	



Immunohistochemistry analysis of paraffin-embedded human lung carcinoma, using Caspase 2 (Phospho-Ser157) Antibody. The picture on the right is blocked with the phospho peptide.

Immunohistochemical analysis of paraffin-embedded Human lung cancer. Antibody was diluted at 1:100 (4°C overnight). High-pressure and temperature Tris-EDTA, pH8.0 was used for antigen retrieval. Negative control (right) obtained from antibody was pre-absorbed by immunogen peptide.

This product is suitable for in-vitro studies under the RESEARCH USE ONLY [RUO] licence. This product must not be used as for diagnostic or other medical purposes.
St John's Laboratory Ltd, Knowledge Dock Business Centre, University Way, London, E16 2RD | Tel: 0208 223 3081