

Anti-Phospho-PDGFR α -Tyr754 antibody (690-770) (STJ91153)

STJ91153

GENERAL INFORMATION

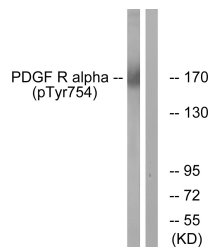
Product Type	Primary antibodies
Short Description	Rabbit polyclonal antibody anti-Phospho-Platelet-Derived Growth Factor Receptor Alpha-Tyr754 (690-770) is suitable for use in Western Blot, Immunohistochemistry, Immunofluorescence and ELISA research applications.
Applications	WB, IHC-P, IF-P, ELISA
Host/Source	Rabbit
Reactivity	Human, Mouse, Rat

PRODUCT PROPERTIES

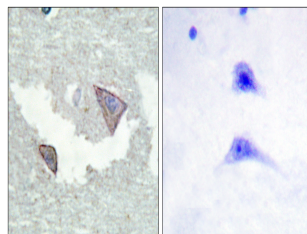
Clonality	Polyclonal
Clone ID	
Concentration	1 mg/mL
Conjugation	Unconjugated
Purification	The antibody was affinity-purified from rabbit anti-serum by affinity-chromatography.
Dilution Range	WB 1:500-1:2000 IHC 1:100-1:300 ELISA 1:5000
Formulation	PBS, 50% Glycerol, 0.5% BSA and 0.02% Sodium Azide.
Isotype	IgG
Storage Instruction	Store at -20°C for up to 1 year from the date of receipt, and avoid repeat freeze-thaw cycles.

TARGET INFORMATION

Gene ID	5156
Gene Symbol	PDGFRA
Uniprot ID	PGFRA_HUMAN
Immunogen	The antiserum was produced against synthesized peptide derived from human PDGFR alpha around the phosphorylation site of Tyr754 at amino acid range 721-770
Immunogen Region	690-770
Specificity	Phospho-PDGFR α -Tyr754 polyclonal antibody (Platelet-Derived Growth Factor Receptor Alpha) binds to endogenous Platelet-Derived Growth Factor Receptor Alpha at the amino acid region 690-770 only when phosphorylated at Tyr754.
Immunogen Sequence	



Western blot analysis of PDGFR alpha (Phospho-Tyr754) Antibody. The lane on the right is blocked with the PDGFR alpha (Phospho-Tyr754) peptide.



Immunohistochemistry analysis of paraffin-embedded human brain, using PDGFR alpha (Phospho-Tyr754) Antibody. The picture on the right is blocked with the phospho peptide.

This product is suitable for in-vitro studies under the RESEARCH USE ONLY [RUO] licence. This product must not be used as for diagnostic or other medical purposes.
St John's Laboratory Ltd, Knowledge Dock Business Centre, University Way, London, E16 2RD | Tel: 0208 223 3081