

## Anti-Phospho-CDKN1B-Ser178 antibody (120-200) (STJ91151)

STJ91151

### GENERAL INFORMATION

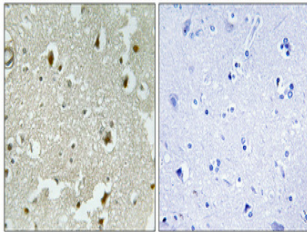
<b>Product Type</b>	Primary antibodies
<b>Short Description</b>	Rabbit polyclonal antibody anti-Phospho-Cyclin-Dependent Kinase Inhibitor 1b-Ser178 (120-200) is suitable for use in Immunohistochemistry, Immunofluorescence and ELISA research applications.
<b>Applications</b>	IHC-P, IF-P, ELISA
<b>Host/Source</b>	Rabbit
<b>Reactivity</b>	Human, Mouse

### PRODUCT PROPERTIES

<b>Clonality</b>	Polyclonal
<b>Clone ID</b>	
<b>Concentration</b>	1 mg/mL
<b>Conjugation</b>	Unconjugated
<b>Purification</b>	The antibody was affinity-purified from rabbit anti-serum by affinity-chromatography.
<b>Dilution</b>	IHC 1:100-1:300
<b>Range</b>	ELISA 1:5000
<b>Formulation</b>	PBS, 50% Glycerol, 0.5% BSA and 0.02% Sodium Azide.
<b>Isotype</b>	IgG
<b>Storage</b>	Store at -20°C for up to 1 year from the date of receipt, and avoid repeat freeze-thaw cycles.
<b>Instruction</b>	

### TARGET INFORMATION

<b>Gene ID</b>	1027
<b>Gene Symbol</b>	CDKN1B
<b>Uniprot ID</b>	CDN1B_HUMAN
<b>Immunogen</b>	The antiserum was produced against synthesized peptide derived from human p27 Kip1 around the phosphorylation site of Ser178 at amino acid range 144-193
<b>Immunogen Region</b>	120-200
<b>Specificity</b>	Phospho-CDKN1B-Ser178 polyclonal antibody (Cyclin-Dependent Kinase Inhibitor 1b) binds to endogenous Cyclin-Dependent Kinase Inhibitor 1b at the amino acid region 120-200 only when phosphorylated at Ser178.
<b>Immunogen Sequence</b>	



Immunohistochemical analysis of paraffin-embedded Human brain. Antibody was diluted at 1:100 (4°C overnight). High-pressure and temperature Tris-EDTA, pH8.0 was used for antigen retrieval. Negative control (right) obtained from antibody was pre-absorbed by immunogen peptide.

This product is suitable for in-vitro studies under the RESEARCH USE ONLY [RUO] licence. This product must not be used as for diagnostic or other medical purposes.  
St John's Laboratory Ltd, Knowledge Dock Business Centre, University Way, London, E16 2RD | Tel: 0208 223 3081