

Anti-Phospho-IFNAR1-Tyr466 antibody (410-490) (STJ91149)

STJ91149

GENERAL INFORMATION

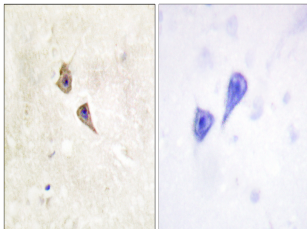
Product Type	Primary antibodies
Short Description	Rabbit polyclonal antibody anti-Phospho-Interferon Alpha/Beta Receptor 1-Tyr466 (410-490) is suitable for use in Western Blot, Immunohistochemistry, Immunofluorescence and ELISA research applications.
Applications	WB, IHC-P, IF-P, ELISA
Host/Source	Rabbit
Reactivity	Human, Rat, Mouse

PRODUCT PROPERTIES

Clonality	Polyclonal
Clone ID	
Concentration	1 mg/mL
Conjugation	Unconjugated
Purification	The antibody was affinity-purified from rabbit anti-serum by affinity-chromatography.
Dilution Range	WB 1:500-1:2000 IHC 1:100-1:300 ELISA 1:10000
Formulation	PBS, 50% Glycerol, 0.5% BSA and 0.02% Sodium Azide.
Isotype	IgG
Storage Instruction	Store at 20°C for up to 1 year from the date of receipt, and avoid repeat freeze-thaw cycles.

TARGET INFORMATION

Gene ID	3454
Gene Symbol	IFNAR1
Uniprot ID	INAR1_HUMAN
Immunogen	The antiserum was produced against synthesized peptide derived from human Interferon-alpha/beta Receptor alpha around the phosphorylation site of Tyr466 at amino acid range 436-485
Immunogen Region	410-490
Specificity	Phospho-IFNAR1-Tyr466 polyclonal antibody (Interferon Alpha/Beta Receptor 1) binds to endogenous Interferon Alpha/Beta Receptor 1 at the amino acid region 410-490 only when phosphorylated at Tyr466.
Immunogen Sequence	



Immunohistochemistry analysis of paraffin-embedded human brain, using Interferon-alpha/beta Receptor alpha (Phospho-Tyr466) Antibody. The picture on the right is blocked with the phospho peptide.

This product is suitable for in-vitro studies under the RESEARCH USE ONLY [RUO] licence. This product must not be used as for diagnostic or other medical purposes.
St John's Laboratory Ltd, Knowledge Dock Business Centre, University Way, London, E16 2RD | Tel: 0208 223 3081