

Anti-Phospho-PRKDC-Ser2056 antibody (1990-2070) (STJ91147)

STJ91147

GENERAL INFORMATION

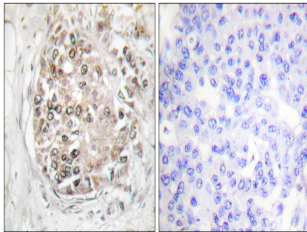
Product Type	Primary antibodies
Short Description	Rabbit polyclonal antibody anti-Phospho-Dna-Dependent Protein Kinase Catalytic Subunit-Ser2056 (1990-2070) is suitable for use in Immunohistochemistry, Immunofluorescence and ELISA research applications.
Applications	IHC-P, IF-P, ELISA
Host/Source	Rabbit
Reactivity	Human, Mouse

PRODUCT PROPERTIES

Clonality	Polyclonal
Clone ID	
Concentration	1 mg/mL
Conjugation	Unconjugated
Purification	The antibody was affinity-purified from rabbit anti-serum by affinity-chromatography.
Dilution	IHC 1:100-1:300
Range	ELISA 1:20000
Formulation	PBS, 50% Glycerol, 0.5% BSA and 0.02% Sodium Azide.
Isotype	IgG
Storage	Store at -20°C for up to 1 year from the date of receipt, and avoid repeat freeze-thaw cycles.
Instruction	

TARGET INFORMATION

Gene ID	5591
Gene Symbol	PRKDC
Uniprot ID	PRKDC_HUMAN
Immunogen	The antiserum was produced against synthesized peptide derived from human DNA-PK around the phosphorylation site of Ser2056 at amino acid range 2022-2071
Immunogen Region	1990-2070
Specificity	Phospho-PRKDC-Ser2056 polyclonal antibody (Dna-Dependent Protein Kinase Catalytic Subunit) binds to endogenous Dna-Dependent Protein Kinase Catalytic Subunit at the amino acid region 1990-2070 only when phosphorylated at Ser2056.
Immunogen Sequence	



Immunohistochemistry analysis of paraffin-embedded human breast carcinoma, using DNA-PK (Phospho-Ser2056) Antibody. The picture on the right is blocked with the phospho-peptide.

This product is suitable for in-vitro studies under the RESEARCH USE ONLY [RUO] licence. This product must not be used as for diagnostic or other medical purposes.
St John's Laboratory Ltd, Knowledge Dock Business Centre, University Way, London, E16 2RD | Tel: 0208 223 3081