

## Anti-Phospho-CRYAB-Ser59 antibody (1-80) (STJ91145)

STJ91145

### GENERAL INFORMATION

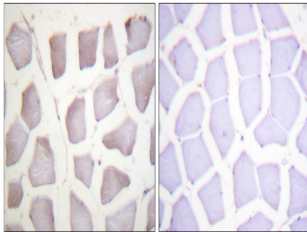
<b>Product Type</b>	Primary antibodies
<b>Short Description</b>	Rabbit polyclonal antibody anti-Phospho-Alpha-Crystallin B Chain-Ser59 (1-80) is suitable for use in Immunohistochemistry, Immunofluorescence and ELISA research applications.
<b>Applications</b>	IHC-P, IF-P, ELISA
<b>Host/Source</b>	Rabbit
<b>Reactivity</b>	Human, Mouse, Rat

### PRODUCT PROPERTIES

<b>Clonality</b>	Polyclonal
<b>Clone ID</b>	
<b>Concentration</b>	1 mg/mL
<b>Conjugation</b>	Unconjugated
<b>Purification</b>	The antibody was affinity-purified from rabbit anti-serum by affinity-chromatography.
<b>Dilution Range</b>	IHC 1:100-1:300 ELISA 1:5000
<b>Formulation</b>	PBS, 50% Glycerol, 0.5% BSA and 0.02% Sodium Azide.
<b>Isotype</b>	IgG
<b>Storage</b>	Store at -20°C for up to 1 year from the date of receipt, and avoid repeat freeze-thaw cycles.
<b>Instruction</b>	

### TARGET INFORMATION

<b>Gene ID</b>	1410
<b>Gene Symbol</b>	CRYAB
<b>Uniprot ID</b>	CRYAB_HUMAN
<b>Immunogen</b>	The antiserum was produced against synthesized peptide derived from human CRYAB/Crystallin-alpha-B around the phosphorylation site of Ser59 at amino acid range 31-80
<b>Immunogen Region</b>	1-80
<b>Specificity</b>	Phospho-CRYAB-Ser59 polyclonal antibody (Alpha-Crystallin B Chain) binds to endogenous Alpha-Crystallin B Chain at the amino acid region 1-80 only when phosphorylated at Ser59.
<b>Immunogen Sequence</b>	



Immunohistochemistry analysis of paraffin-embedded human skeletal muscle, using CRYAB/Crystallin-alpha-B (Phospho-Ser59) Antibody. The picture on the right is blocked with the phospho peptide.