

Anti-Phospho-CSF1R-Tyr809 antibody (750-830) (STJ91144)

STJ91144

GENERAL INFORMATION

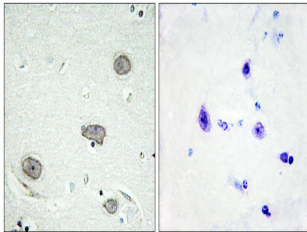
Product Type	Primary antibodies
Short Description	Rabbit polyclonal antibody anti-Phospho-Macrophage Colony-Stimulating Factor 1 Receptor-Tyr809 (750-830) is suitable for use in Immunohistochemistry, Immunofluorescence and ELISA research applications.
Applications	IHC-P, IF-P, ELISA
Host/Source	Rabbit
Reactivity	Human, Rat, Mouse

PRODUCT PROPERTIES

Clonality	Polyclonal
Clone ID	
Concentration	1 mg/mL
Conjugation	Unconjugated
Purification	The antibody was affinity-purified from rabbit anti-serum by affinity-chromatography.
Dilution	IHC 1:100-1:300
Range	ELISA 1:20000
Formulation	PBS, 50% Glycerol, 0.5% BSA and 0.02% Sodium Azide.
Isotype	IgG
Storage	Store at -20°C for up to 1 year from the date of receipt, and avoid repeat freeze-thaw cycles.
Instruction	

TARGET INFORMATION

Gene ID	1436
Gene Symbol	CSF1R
Uniprot ID	CSF1R_HUMAN
Immunogen	The antiserum was produced against synthesized peptide derived from human CSFR around the phosphorylation site of Tyr809 at amino acid range 781-830
Immunogen Region	750-830
Specificity	Phospho-CSF1R-Tyr809 polyclonal antibody (Macrophage Colony-Stimulating Factor 1 Receptor) binds to endogenous Macrophage Colony-Stimulating Factor 1 Receptor at the amino acid region 750-830 only when phosphorylated at Tyr809.
Immunogen Sequence	



Immunohistochemistry analysis of paraffin-embedded human brain, using CSFR (Phospho-Tyr809) Antibody. The picture on the right is blocked with the phospho peptide.