

Anti-Phospho-C5AR1-Ser338 antibody (270-350) (STJ91142)

STJ91142

GENERAL INFORMATION

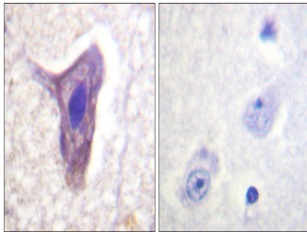
Product Type	Primary antibodies
Short Description	Rabbit polyclonal antibody anti-Phospho-C5a Anaphylatoxin Chemotactic Receptor 1-Ser338 (270-350) is suitable for use in Immunohistochemistry, Immunofluorescence and ELISA research applications.
Applications	IHC-P, IF-P, ELISA
Host/Source	Rabbit
Reactivity	Human, Rat, Mouse

PRODUCT PROPERTIES

Clonality	Polyclonal
Clone ID	
Concentration	1 mg/mL
Conjugation	Unconjugated
Purification	The antibody was affinity-purified from rabbit anti-serum by affinity-chromatography.
Dilution	IHC 1:100-1:300
Range	ELISA 1:40000
Formulation	PBS, 50% Glycerol, 0.5% BSA and 0.02% Sodium Azide.
Isotype	IgG
Storage	Store at -20°C for up to 1 year from the date of receipt, and avoid repeat freeze-thaw cycles.
Instruction	

TARGET INFORMATION

Gene ID	728
Gene Symbol	C5AR1
Uniprot ID	C5AR1_HUMAN
Immunogen	The antiserum was produced against synthesized peptide derived from human CD88/C5aR around the phosphorylation site of Ser338 at amino acid range 301-350
Immunogen Region	270-350
Specificity	Phospho-C5AR1-Ser338 polyclonal antibody (C5a Anaphylatoxin Chemotactic Receptor 1) binds to endogenous C5a Anaphylatoxin Chemotactic Receptor 1 at the amino acid region 270-350 only when phosphorylated at Ser338.
Immunogen Sequence	



Immunohistochemistry analysis of paraffin-embedded human brain, using CD88/C5aR1 (Phospho-Ser338) Antibody. The picture on the right is blocked with the phospho peptide.