

## Anti-Phospho-MUC1-Tyr1243 antibody (1180-1260) (STJ91141)

STJ91141

### GENERAL INFORMATION

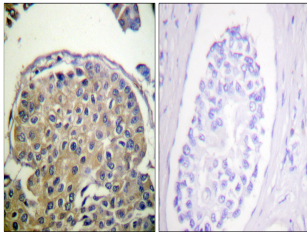
|                          |  |
|--------------------------|--|
| <b>Product Type</b>      | Primary antibodies   |
| <b>Short Description</b> | Rabbit polyclonal antibody anti-Phospho-Mucin-1-Tyr1243 (1180-1260) is suitable for use in Western Blot, Immunohistochemistry, Immunofluorescence and ELISA research applications. |
| <b>Applications</b>      | WB, IHC-P, IF-P, ELISA   |
| <b>Host/Source</b>       | Rabbit   |
| <b>Reactivity</b>        | Human, Mouse   |

### PRODUCT PROPERTIES

|                       |  |
|-----------------------|--|
| <b>Clonality</b>      | Polyclonal   |
| <b>Clone ID</b>       |  |
| <b>Concentration</b>  | 1 mg/mL  |
| <b>Conjugation</b>    | Unconjugated   |
| <b>Purification</b>   | The antibody was affinity-purified from rabbit anti-serum by affinity-chromatography.          |
| <b>Dilution Range</b> | IHC 1:100-1:300<br>ELISA 1:20000   |
| <b>Formulation</b>    | PBS, 50% Glycerol, 0.5% BSA and 0.02% Sodium Azide.  |
| <b>Isotype</b>        | IgG  |
| <b>Storage</b>        | Store at -20°C for up to 1 year from the date of receipt, and avoid repeat freeze-thaw cycles. |
| <b>Instruction</b>    |  |

### TARGET INFORMATION

|                           |  |
|---------------------------|--|
| <b>Gene ID</b>            | 4582   |
| <b>Gene Symbol</b>        | MUC1   |
| <b>Uniprot ID</b>         | MUC1_HUMAN   |
| <b>Immunogen</b>          | The antiserum was produced against synthesized peptide derived from human CD227/Mucin 1 around the phosphorylation site of Tyr1243 at amino acid range 1204-1253 |
| <b>Immunogen Region</b>   | 1180-1260  |
| <b>Specificity</b>        | Phospho-MUC1-Tyr1243 polyclonal antibody (Mucin-1) binds to endogenous Mucin-1 at the amino acid region 1180-1260 only when phosphorylated at Tyr1243.           |
| <b>Immunogen Sequence</b> |  |



Immunohistochemistry analysis of paraffin-embedded human breast carcinoma, using CD227/Mucin 1 (Phospho-Tyr1243) Antibody. The picture on the right is blocked with the phospho peptide.