

Anti-Phospho-RBL1-Thr369 antibody (310-390) (STJ91140)

STJ91140

GENERAL INFORMATION

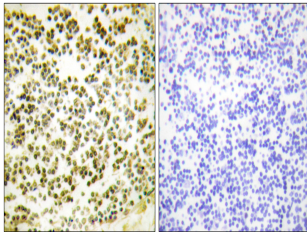
Product Type	Primary antibodies
Short Description	Rabbit polyclonal antibody anti-Phospho-Retinoblastoma-Like Protein 1-Thr369 (310-390) is suitable for use in Western Blot, Immunohistochemistry, Immunofluorescence and ELISA research applications.
Applications	WB, IHC-P, IF-P, ELISA
Host/Source	Rabbit
Reactivity	Human, Mouse

PRODUCT PROPERTIES

Clonality	Polyclonal
Clone ID	
Concentration	1 mg/mL
Conjugation	Unconjugated
Purification	The antibody was affinity-purified from rabbit anti-serum by affinity-chromatography.
Dilution	IHC 1:100-1:300
Range	ELISA 1:5000
Formulation	PBS, 50% Glycerol, 0.5% BSA and 0.02% Sodium Azide.
Isotype	IgG
Storage	Store at -20°C for up to 1 year from the date of receipt, and avoid repeat freeze-thaw cycles.
Instruction	

TARGET INFORMATION

Gene ID	5933
Gene Symbol	RBL1
Uniprot ID	RBL1_HUMAN
Immunogen	The antiserum was produced against synthesized peptide derived from human RBL1 around the phosphorylation site of Thr369 at amino acid range 335-384
Immunogen Region	310-390
Specificity	Phospho-RBL1-Thr369 polyclonal antibody (Retinoblastoma-Like Protein 1) binds to endogenous Retinoblastoma-Like Protein 1 at the amino acid region 310-390 only when phosphorylated at Thr369.
Immunogen Sequence	



Immunohistochemistry analysis of paraffin-embedded human lymph node, using RBL1 (Phospho-Thr369) Antibody. The picture on the right is blocked with the phospho peptide.