

## Anti-Phospho-BRAF-Thr599 antibody (540-620) (STJ91139)

STJ91139

### GENERAL INFORMATION

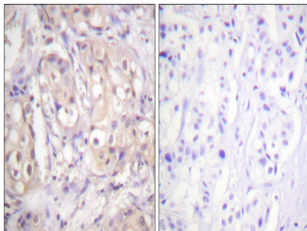
<b>Product Type</b>	Primary antibodies
<b>Short Description</b>	Rabbit polyclonal antibody anti-Phospho-Serine/Threonine-Protein Kinase B-Raf-Thr599 (540-620) is suitable for use in Western Blot, Immunohistochemistry, Immunofluorescence and ELISA research applications.
<b>Applications</b>	WB, IHC-P, IF-P, ELISA
<b>Host/Source</b>	Rabbit
<b>Reactivity</b>	Human, Mouse, Rat

### PRODUCT PROPERTIES

<b>Clonality</b>	Polyclonal
<b>Clone ID</b>	
<b>Concentration</b>	1 mg/mL
<b>Conjugation</b>	Unconjugated
<b>Purification</b>	The antibody was affinity-purified from rabbit anti-serum by affinity-chromatography.
<b>Dilution Range</b>	WB 1:500-2000 IHC 1:100-1:300 ELISA 1:40000
<b>Formulation</b>	PBS, 50% Glycerol, 0.5% BSA and 0.02% Sodium Azide.
<b>Isotype</b>	IgG
<b>Storage Instruction</b>	Store at -20°C for up to 1 year from the date of receipt, and avoid repeat freeze-thaw cycles.

### TARGET INFORMATION

<b>Gene ID</b>	673
<b>Gene Symbol</b>	BRAF
<b>Uniprot ID</b>	BRAF_HUMAN
<b>Immunogen</b>	The antiserum was produced against synthesized peptide derived from human B-RAF around the phosphorylation site of Thr599 at amino acid range 571-620
<b>Immunogen Region</b>	540-620
<b>Specificity</b>	Phospho-BRAF-Thr599 polyclonal antibody (Serine/Threonine-Protein Kinase B-Raf) binds to endogenous Serine/Threonine-Protein Kinase B-Raf at the amino acid region 540-620 only when phosphorylated at Thr599.
<b>Immunogen Sequence</b>	



Immunohistochemistry analysis of paraffin-embedded human breast carcinoma, using B-RAF (Phospho-Thr599) Antibody. The picture on the right is blocked with the phospho peptide.

This product is suitable for in-vitro studies under the RESEARCH USE ONLY [RUO] licence. This product must not be used as for diagnostic or other medical purposes.  
St John's Laboratory Ltd, Knowledge Dock Business Centre, University Way, London, E16 2RD | Tel: 0208 223 3081