

Anti-Phospho-AQP2-Ser256 antibody (200-280) (STJ91138)

STJ91138

GENERAL INFORMATION

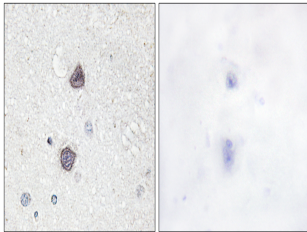
Product Type	Primary antibodies
Short Description	Rabbit polyclonal antibody anti-Phospho-Aquaporin-2-Ser256 (200-280) is suitable for use in Immunohistochemistry, Immunofluorescence and ELISA research applications.
Applications	IHC-P, IF-P, ELISA
Host/Source	Rabbit
Reactivity	Human, Mouse, Rat

PRODUCT PROPERTIES

Clonality	Polyclonal
Clone ID	
Concentration	1 mg/mL
Conjugation	Unconjugated
Purification	The antibody was affinity-purified from rabbit anti-serum by affinity-chromatography.
Dilution Range	IHC 1:100-1:300 ELISA 1:40000
Formulation	PBS, 50% Glycerol, 0.5% BSA and 0.02% Sodium Azide.
Isotype	IgG
Storage	Store at -20°C for up to 1 year from the date of receipt, and avoid repeat freeze-thaw cycles.
Instruction	

TARGET INFORMATION

Gene ID	359
Gene Symbol	AQP2
Uniprot ID	AQP2_HUMAN
Immunogen	The antiserum was produced against synthesized peptide derived from human Aquaporin 2 around the phosphorylation site of Ser256 at amino acid range 222-271
Immunogen Region	200-280
Specificity	Phospho-AQP2-Ser256 polyclonal antibody (Aquaporin-2) binds to endogenous Aquaporin-2 at the amino acid region 200-280 only when phosphorylated at Ser256.
Immunogen Sequence	



Immunohistochemistry analysis of paraffin-embedded human brain, using Aquaporin 2 (Phospho-Ser256) Antibody. The picture on the right is blocked with the phospho peptide.