

## Anti-Phospho-Actin-Alpha/Gamma-Tyr55/53 antibody (40-120) (STJ91137)

STJ91137

### GENERAL INFORMATION

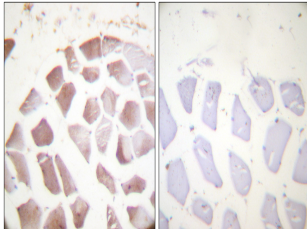
<b>Product Type</b>	Primary antibodies
<b>Short Description</b>	Rabbit polyclonal antibody anti-Phospho-Actin, alpha cardiac muscle 1 and Actin, cytoplasmic 2 and Actin, gamma-enteric smooth muscle and Actin, alpha skeletal muscle-Tyr55/53 (40-120) is suitable for use in Immunohistochemistry, Immunofluorescence a
<b>Applications</b>	IHC-P, IF-P, ELISA
<b>Host/Source</b>	Rabbit
<b>Reactivity</b>	Human, Mouse, Rat

### PRODUCT PROPERTIES

<b>Clonality</b>	Polyclonal
<b>Clone ID</b>	
<b>Concentration</b>	1 mg/mL
<b>Conjugation</b>	Unconjugated
<b>Purification</b>	The antibody was affinity-purified from rabbit anti-serum by affinity-chromatography.
<b>Dilution</b>	IHC 1:100-1:300
<b>Range</b>	ELISA 1:5000
<b>Formulation</b>	PBS, 50% Glycerol, 0.5% BSA and 0.02% Sodium Azide.
<b>Isotype</b>	IgG
<b>Storage</b>	Store at-20°C for up to 1 year from the date of receipt, and avoid repeat freeze-thaw cycles.
<b>Instruction</b>	

### TARGET INFORMATION

<b>Gene ID</b>	<a href="#">71</a> <a href="#">72</a> <a href="#">70</a> <a href="#">ACTG1</a> <a href="#">ACTG2</a> <a href="#">ACTG_HUMAN</a> <a href="#">ACTH_HUMAN</a> <a href="#">ACTC_HUMAN</a> <
<b>Immunogen</b>	The antiserum was produced against synthesized peptide derived from human Actin-pan around the phosphorylation site of Tyr55/53 at amino acid range 21-70
<b>Immunogen Region</b>	40-120
<b>Specificity</b>	Phospho-Actin-Alpha/Gamma-Tyr55/53 polyclonal antibody (Actin, alpha cardiac muscle 1 and Actin, cytoplasmic 2 and Actin, gamma-enteric smooth muscle and Actin, alpha skeletal muscle) binds to endogenous Actin, alpha cardiac muscle 1 and Actin, cytop
<b>Immunogen Sequence</b>	



Immunohistochemistry analysis of paraffin-embedded human skeletal muscle, using Actin-pan (alpha/gamma) (Phospho-Tyr55/53) Antibody. The picture on the right is blocked with the phospho peptide.