

Anti-Phospho-TEK-Tyr1102 antibody (1040-1120) (STJ91136)

STJ91136

GENERAL INFORMATION

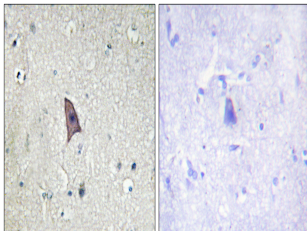
Product Type	Primary antibodies
Short Description	Rabbit polyclonal antibody anti-Phospho-Angiopoietin-1 Receptor-Tyr1102 (1040-1120) is suitable for use in Immunohistochemistry, Immunofluorescence and ELISA research applications.
Applications	IHC-P, IF-P, ELISA
Host/Source	Rabbit
Reactivity	Human, Mouse

PRODUCT PROPERTIES

Clonality	Polyclonal
Clone ID	
Concentration	1 mg/mL
Conjugation	Unconjugated
Purification	The antibody was affinity-purified from rabbit anti-serum by affinity-chromatography.
Dilution Range	WB 1:500-2000 IHC 1:100-1:300 ELISA 1:40000
Formulation	PBS, 50% Glycerol, 0.5% BSA and 0.02% Sodium Azide.
Isotype	IgG
Storage Instruction	Store at -20°C for up to 1 year from the date of receipt, and avoid repeat freeze-thaw cycles.

TARGET INFORMATION

Gene ID	7010
Gene Symbol	TEK
Uniprot ID	TIE2_HUMAN
Immunogen	The antiserum was produced against synthesized peptide derived from human TIE2 around the phosphorylation site of Tyr1102 at amino acid range 1068-1117
Immunogen Region	1040-1120
Specificity	Phospho-TEK-Tyr1102 polyclonal antibody (Angiopoietin-1 Receptor) binds to endogenous Angiopoietin-1 Receptor at the amino acid region 1040-1120 only when phosphorylated at Tyr1102.
Immunogen Sequence	



Immunohistochemistry analysis of paraffin-embedded human brain, using TIE2 (Phospho-Tyr1102) Antibody. The picture on the right is blocked with the phosphopeptide.

This product is suitable for in-vitro studies under the RESEARCH USE ONLY [RUO] licence. This product must not be used as for diagnostic or other medical purposes.
St John's Laboratory Ltd, Knowledge Dock Business Centre, University Way, London, E16 2RD | Tel: 0208 223 3081