

Anti-Phospho-Ras-GRF1-Ser916 antibody (860-940) (STJ91135)

STJ91135

GENERAL INFORMATION

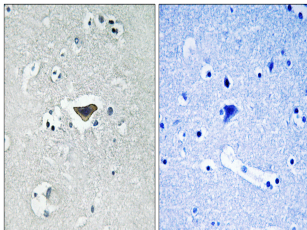
Product Type	Primary antibodies
Short Description	Rabbit polyclonal antibody anti-Phospho-RASGRF1-Ser916 (860-940) is suitable for use in Western Blot, Immunohistochemistry, Immunofluorescence, Immunocytochemistry and ELISA research applications.
Applications	WB, IHC-P, IF, ICC, ELISA
Host/Source	Rabbit
Reactivity	Mouse, Rat

PRODUCT PROPERTIES

Clonality	Polyclonal
Clone ID	
Concentration	1 mg/mL
Conjugation	Unconjugated
Purification	The antibody was affinity-purified from rabbit anti-serum by affinity-chromatography.
Dilution Range	IHC 1:100-1:300 IF 1:200-1:1000 ELISA 1:20000
Formulation	PBS, 50% Glycerol, 0.5% BSA and 0.02% Sodium Azide.
Isotype	IgG
Storage Instruction	Store at -20°C for up to 1 year from the date of receipt, and avoid repeat freeze-thaw cycles.

TARGET INFORMATION

Gene ID	
Gene Symbol	
Uniprot ID	
Immunogen	The antiserum was produced against synthesized peptide derived from mouse Ras-GRF1 around the phosphorylation site of Ser916 at amino acid range 882-931
Immunogen Region	860-940
Specificity	Phospho-Ras-GRF1-Ser916 polyclonal antibody (RASGRF1) binds to endogenous RASGRF1 at the amino acid region 860-940 only when phosphorylated at Ser916.
Immunogen Sequence	



Immunohistochemistry analysis of paraffin-embedded human brain, using Ras-GRF1 (Phospho-Ser916) Antibody. The picture on the right is blocked with the phospho peptide.