

## Anti-Phospho-RYR2-Ser2808 antibody (2750-2830) (STJ91127)

STJ91127

### GENERAL INFORMATION

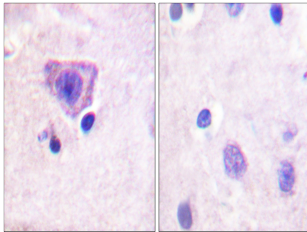
<b>Product Type</b>	Primary antibodies
<b>Short Description</b>	Rabbit polyclonal antibody anti-Phospho-Ryanodine Receptor 2-Ser2808 (2750-2830) is suitable for use in Immunohistochemistry, Immunofluorescence and ELISA research applications.
<b>Applications</b>	IHC-P, IF-P, ELISA
<b>Host/Source</b>	Rabbit
<b>Reactivity</b>	Human, Mouse, Rat

### PRODUCT PROPERTIES

<b>Clonality</b>	Polyclonal
<b>Clone ID</b>	
<b>Concentration</b>	1 mg/mL
<b>Conjugation</b>	Unconjugated
<b>Purification</b>	The antibody was affinity-purified from rabbit anti-serum by affinity-chromatography.
<b>Dilution Range</b>	IHC 1:100-1:300 ELISA 1:10000
<b>Formulation</b>	PBS, 50% Glycerol, 0.5% BSA and 0.02% Sodium Azide.
<b>Isotype</b>	IgG
<b>Storage Instruction</b>	Store at -20°C for up to 1 year from the date of receipt, and avoid repeat freeze-thaw cycles.

### TARGET INFORMATION

<b>Gene ID</b>	<a href="#">6262</a>
<b>Gene Symbol</b>	<a href="#">RYR2</a>
<b>Uniprot ID</b>	<a href="#">RYR2_HUMAN</a>
<b>Immunogen</b>	The antiserum was produced against synthesized peptide derived from human RyR2 around the phosphorylation site of Ser2808 at amino acid range 2774-2823
<b>Immunogen Region</b>	2750-2830
<b>Specificity</b>	Phospho-RYR2-Ser2808 polyclonal antibody (Ryanodine Receptor 2) binds to endogenous Ryanodine Receptor 2 at the amino acid region 2750-2830 only when phosphorylated at Ser2808.
<b>Immunogen Sequence</b>	



Immunohistochemistry analysis of paraffin-embedded human brain, using RyR2 (Phospho-Ser2808) Antibody. The picture on the right is blocked with the phospho peptide.