

Anti-Phospho-RHO-Ser334 antibody (270-350) (STJ91126)

STJ91126

GENERAL INFORMATION

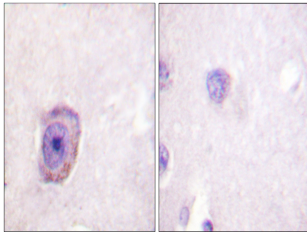
Product Type	Primary antibodies
Short Description	Rabbit polyclonal antibody anti-Phospho-Rhodopsin-Ser334 (270-350) is suitable for use in Immunohistochemistry, Immunofluorescence and ELISA research applications.
Applications	IHC-P, IF-P, ELISA
Host/Source	Rabbit
Reactivity	Human, Mouse, Rat

PRODUCT PROPERTIES

Clonality	Polyclonal
Clone ID	
Concentration	1 mg/mL
Conjugation	Unconjugated
Purification	The antibody was affinity-purified from rabbit anti-serum by affinity-chromatography.
Dilution Range	IHC 1:100-1:300 ELISA 1:10000
Formulation	PBS, 50% Glycerol, 0.5% BSA and 0.02% Sodium Azide.
Isotype	IgG
Storage	Store at -20°C for up to 1 year from the date of receipt, and avoid repeat freeze-thaw cycles.
Instruction	

TARGET INFORMATION

Gene ID	6010
Gene Symbol	RHO
Uniprot ID	OPSD_HUMAN
Immunogen	The antiserum was produced against synthesized peptide derived from human Rhodopsin around the phosphorylation site of Ser334 at amino acid range 299-348
Immunogen Region	270-350
Specificity	Phospho-RHO-Ser334 polyclonal antibody (Rhodopsin) binds to endogenous Rhodopsin at the amino acid region 270-350 only when phosphorylated at Ser334.
Immunogen Sequence	



Immunohistochemistry analysis of paraffin-embedded human brain, using Rhodopsin (Phospho-Ser334) Antibody. The picture on the right is blocked with the phospho peptide.